



SMARTER MANUFACTURING HUB

**AUTOMATION PRODUCT
MODEL SELECTION GUIDE**

Precise Process Instrumentation & Automation

INDEX

AUTOMATION PRODUCT RANGE

	CX series HMI Inbuilt PLC
1	10" HMI Inbuilt PLC
2	7" HMI Inbuilt PLC
3	4.3" HMI Inbuilt PLC
	Programmable Logic Controller
4	HPC series PLC, MPC series PLC / Extension Module
5	MPC series Micro PLC with Display & Human Machine Interface
	HPE Series Multi Channel PID Module
6	Multi Channel PID Module
	SCR Power Regulator
7	TR-SCR Power Regulator
8	Trigger Module, Furnace Controller
	PF Series HRTC
9	Hot Runner Temperature Controller
	SPR Series of Paperless Recorder
10	Paperless Recorder
11	IOT Customized Solution



HMI DESCRIPTION

Display Specification	Screen Type	TFT LCD
	Display Color	65535 true color
	Resolution	1024 X 600 pixels
	Backlight	led
	Display Size	10"
	Touch Panel	resistive touch panel
Flash Memory		128m bytes
Serial Com Port	COM 1	
	COM 2	RS-485 (Extra)
	COM 3	RS-485 (Extra)
SUPPORTED FILE IN HMI		JPEG / JPG / PNG / GIFS / QR CODE
Data Logging		no
BUZZER		BUILT IN 85DB
COOLING METHOD		NATURAL AIR CIRCULATION
WORKING ENVIRONMENT		0-50 C/ RH: 35 - 85%
WEIGHT (APROX)		1.100GM
SAFETY PROTECTION		IP65 FRONT PANEL

PLC DESCRIPTION

Inbuilt I/o's	8 di / 8do (minimum)
Maximum DI (expansion)*	32 (NPN/PNP)
Maximum DO (expansion)*	28 (RELAY / TRANSISTOR/ANALOG)
Relay Output	NO type 3A @ 230v Ac / 30V DC (Resistive)
Transistor Output	source type 100mA@24vDC
Temperature Input	up to 16 TC/RTD Selectable
Analog Input	up to 16 4-20MA/ 1-5VDC/ 0-20MA/0-10VDC/0-5VDC/2-10VDC
Resolution	14bits
Analog Output	UP TO 12 (4-20ma / 0-10vdc) Factory Set
Resolution	14bits (0.0 to 100.0% = 0 to 10.000V, 0.0 to 100.0% = 0 to 20.000mA)
High Speed Input	4 ch up to 15khz
High Speed Output	up to 4 ch (1Ch-200Khz, 2Ch-150Khz, 3Ch - 100Khz, 4Ch - 100KHZ)
Programm Memory	< 25K
Data Capacity	M - 8.5K BYTES
	D - 8.2K BYTES
	T - T0-T511
	C - C0-C511
Data Retention	D8160 - D8191 (32BYTE)
Rtc	Built in
Comon Description (HIM & PLC)	
Programm Download Prot	USB C TYPE / RS-485 for HMI & PLC
Operating Voltage	+24VDC (-10% TO +20%)
Backup Battery	3V LITHIUM BATTERY

(Note: Please Refer Model Selection Guide & Dimension For More Details)



HMI DESCRIPTION

Display Specification	Screen Type	TFT LCD
	Display Color	65535 true color
	Resolution	800x480 pixels
	Backlight	led
	Display Size	7"
	Touch Panel	resistive touch panel
Flash Memory		128m bytes
Serial Com Port	COM 1	RS-485 COMMUNICATION
	COM 2	RS-485 (extra)
	COM 3	
SUPPORTED FILE IN HMI		JPEG / JPG / PNG / GIFS / QR CODE
Data Logging		USB Flash drive
BUZZER		BUILT IN 85DB
COOLING METHOD		NATURAL AIR CIRCULATION
WORKING ENVIRONMENT		0-50 C/ RH: 35 - 85%
PANEL CUTOUT		187X135.5MM
WEIGHT (APROX)		750GM
SAFETY PROTECTION		IP65 FRONT PANEL

PLC DESCRIPTION

INBUILT I/O'S		8 di / 8do (minimum)
Maximum DI (expansion)*		24 (NPN/PNP) Prefix
Maximum DO (expansion)*		24 (Relay /Transistor/ANALOG)
Relay Output		NO type 3A @ 230v Ac / 30V DC (Resistive)
Transistor Output		source typre 100mA@24vDC
Temperature Input		up to 16 TC/RTD Selectable
Analog Input		up to 16 4-20MA/ 1-5VDC/ 0-20MA/0-10VDC/0-5VDC/2-10VDC
Resolution		14bits
Analog Output		up to 12 (4-20ma / 0-10vdc) Factory Set
Resolution		14bits (0.0 to 100.0% = 0 to 10.000V, 0.0 to 100.0% = 0 to 20.000mA)
High Speed Input		4 ch up to 15khz
High Speed Output		up to 4 ch (1Ch-200Khz, 2Ch-150Khz, 3Ch - 100Khz, 4Ch - 100KHZ)
Programm Memory		< 25K
DATA CAPACITY		M - 8.5K BYTES D - 8.2K BYTES T - T0-T511 C - C0-C511
DATA RETENTION		D8160 - D8191 (32BYTE)
RTC		Built in
COMON DESCRIPTION (HMI & PLC)		
Programm Download Prot		USB C TYPE / RS-485 for HMI & PLC
OPERATING VOLTAGE		+24VDC (-10% TO +20%)
BACKUP BATTERY		3V LITHIUM BATTERY

(Note: Please Refer Model Selection Guide & Dimension For More Details)



HMI DESCRIPTION

Display Specification	Screen Type	TFT LCD
	Display Color	65535 true color
	Resolution	480 X 270 PIXELS
	Backlight	led
	Display Size	4.3"
	Touch Panel	resistive touch panel
Flash Memory		128m bytes
Serial Com Port	COM 1	RS-485 COMMUNICATION
	COM 2	RS-485 (extra)
	COM 3	
SUPPORTED FILE IN HMI		JPEG / JPG / PNG / GIF'S / QR CODE
Data Logging		USB Flash drive
BUZZER		BUILT IN 85DB
COOLING METHOD		NATURAL AIR CIRCULATION
WORKING ENVIRONMENT		0-50 C/ RH: 35 - 85%
WEIGHT (APROX)		350GM
SAFETY PROTECTION		IP65 FRONT PANEL

PLC DESCRIPTION

Inbuilt I/o's	8 di / 8do (minimum)
Maximum DI (expansion)*	12 (NPN/PNP)
Maximum DO (expansion)*	12 (Relay/Transistor/ANALOG)
Relay Output	NO type 3A @ 230v Ac / 30V DC (Resistive)
Transistor Output	source type 100mA@24vDC
Temperature Input	up to 3 TC/RTD Selectable
Analog Input	up to 3
	4-20MA/ 1-5VDC/ 0-20MA/0-10VDC/0-5VDC/2-10VDC
Resolution	14bits
Analog Output	up to 4 (4-20ma / 0-10vdc) Factory Set
Resolution	14bits (0.0 to 100.0% = 0 to 10.000V, 0.0 to 100.0% = 0 to 20.000mA)
High Speed Input	4 ch up to 15khz
High Speed Output	up to 4 ch (1Ch-200Khz, 2Ch-150Khz, 3Ch - 100Khz, 4Ch - 100KHZ)
Programm Memory	< 25K
Data Capacity	M - 8.5K BYTES
	D - 8.2K BYTES
	T - T0-T511
	C - C0-C511
	D8160 - D8191 (32BYTE)
Data Retention	Built in
RTC	
Comon Description (hmi & Plc)	
Programm Download Prot	USB C TYPE / RS-485 for HMI & PLC
Operating Voltage	+24VDC (-10% TO +20%)
Backup Battery	3V LITHIUM BATTERY

(Note: Please Refer Model Selection Guide & Dimension For More Details)

HPC Series PLC



HPC-12P8R

MODEL NO	HPC-12P8R (12/8)
PROCESSOR	32 BIT MULTITASKING PROCESSOR
PROGRAM CAPACITY	16 KB
EXECUTION SPEED	< 0.2 MICROSEC
DATA RESISTER	8 K WORDS
PROGRAM DOWNLOAD	USB / COM PORT
SERIAL PORT	SERIAL PORT MODBUS RTU (MASTER / SLAVE CONFIGURABLE MODE) BAUD RATE UP TO 115.2 KBPS
I/O'S	12 / 8 (20 POINT)
DI	NPN TYPE
DO	8 RELAY OR TRANSISTOR, 3 AMP / 230V AC
SHELL COLOR	GREY
SHELL MATERIAL	ABS
DIMENSION	95 x 85 x 80 MM (H x W x D)
POWER SUPPLY	24V DC
POWER CONSUMPTION	> 3W
WORKING ENVIRONMENT	TEMP : 0 - 50* C / RH : 35 - 85 % (NON-CONDENSATION)
PROTECTION	IP-65 (FRONT PANEL)

MODEL	SIZE	INPUT	OUTPUT	EXTRA FEATURE
HPC-12P8R-CS	Din-Rail	12 Digital	8 Relay	Inbuilt PID function

Micro PLC / Extension Module



MPC-22-MR



MPC-33-MR

SERIAL PORT	MODBUS RTU (SLAVE) BAUD RATE UP TO 115.2 KBPS	
I/O's	8*DI/8*DO (16POINT)	12* DI / 12* DO (24 POINT)
DI	NPN / PNP TYPE	
DO	8 DO (RELAY OR TRANSISTOR), RELAY: 3 AMP / 230V AC	
TEMP / ANALOG	UP TO MAX 2 CH TC / ANALOG	
AO	UP TO MAX 4 CH ANALOG OUTPUT	
MOUNTING	CHANNEL MOUNTING	
DIMENSION	95 x 95 x 40 MM (H x W x D)	95 x 125 x 40 MM (H x W x D)
POWER SUPPLY	24V DC	
POWER CONSUMPTION	> 3 W	
WORKING ENVIRONMENT	TEMP : 0 - 50* C / RH : 35 - 85 % (NON-CONDENSATION)	
PROTECTION	IP-65 (FRONT PANEL)	

MODEL	DIGITAL INPUT	DIGITAL OUTPUT	ANALOG INPUT	TEMP. INPUT	COM
MPC-22-MR	8 DIGITAL	8 RELAY	NA	NA	RS-485
MPC-222-MTR-T2	8 DIGITAL	8 RELAY	NA	2 CH TC	RS-485
MPC-222-MTR -A2	8 DIGITAL	8 RELAY	2 CH Analog	NA	RS-485
MPC-33-MR	12 DIGITAL	12 RELAY	NA	NA	RS-485
MPC-323-MTR-T2	12 DIGITAL	12 RELAY	NA	2 CH TC	RS-485
MPC-323-MTR-A2	12 DIGITAL	12 RELAY	2 CH Analog	NA	RS-485

Micro PLC With Display



Panel Mount

Channel Mount

MODEL NO	MPC-GP-22-MR	MPC-LP-22-MR	MPC-LC-22-MR / MPC-LC-33-MR
DISPLAY	TFT GRAPHICAL WITH BACK LIGHT	16 X 2 DUAL LINE LCD DISPLAY	
KEYPAD	CONFIGURABLE KEYPAD FOR USER INTERFACE		
PROGRAM DOWNLOAD	RS-485 (PLC / DISPLAY SOFTWARE)		
DISPLAY SOFTWARE	CAUTIONI SWASTIK - LCD / TFT PROGRAMMING SOFTWARE		
I/O's	8*DI/8*DO (16POINT)		
DI	NPN TYPE		
DO	8 DO (RELAY OR TRANSISTOR), RELAY: 3 AMP / 230V AC		
MOUNTING	PANEL MOUNTING	PANEL MOUNTING	CHANNEL MOUNTING
DIMENSION	95 x 95 x 40 MM (HxWxD)	96 x 96 MM (HxWxD)	95 x 95 MM
POWER SUPPLY	24V DC		
POWER CONSUMPTION	> 3 W		

MODEL	DIGITAL INPUT	DIGITAL OUTPUT	TEMP. / ANALOG INPUT	DISPLAY	COM
MPC-GP-22-MR	8 DIGITAL	8 RELAY	NA	TFT	RS-485
MPC-GP-222-MTR-T2/A2	8 DIGITAL	8 RELAY	2 CH Temp. / Analog	TFT	RS-485
MPC-LP-22-MR	8 DIGITAL	8 RELAY	NA	Dual Line LCD 16 x 2	RS-485
MPC-LP-222-MTR-T2/A2	8 DIGITAL	8 RELAY	2 CH Temp. / Analog	Dual Line LCD 16 x 2	RS-485
MPC-LC-22-MR	8 DIGITAL	8 RELAY	NA	Dual Line LCD 16 x 2	RS-485
MPC-LC-222-MTR-T2/A2	8 DIGITAL	8 RELAY	2 CH Temp. / Analog	Dual Line LCD 16 x 2	RS-485

HMI



DISPLAY SPECIFICATION	SCREEN TYPE	TFT LCD
	DISPLAY COLOUR	65535 TRUE COLOUR
	RESOLUTION	1024 X 600 PIXELS
	BACK LIGHT	LED
	DISPLAY SIZE	10"
	TOUCH PANEL	RESISTIVE TOUCH PANEL
FLASH MEMORY		128M BYTES
SERIAL PORT		RS-485 COMMUNICATION
SUPPORTED FILE IN HMI		JPEG / JPG / PNG / GIF'S / QR CODE
PROGRAMMING DOWNLOAD PORT		USB "C" TYPE / RS - 485
BUZZER		BUILT IN 85DB
COOLING METHOD		NATURAL AIR CIRCULATION
WORKING ENVIRONMENT		0-50 C/ RH: 35 - 85%
SAFETY PROTECTION		IP65 FRONT PANEL
OPERATING VOLTAGE		24V DC (-10% TO +20%)

MODEL	DISPLAY SIZE	COM1	COM 2	EXTRA FEATURE	DOWNLOAD PORT
CH043-C	4.3"	RS-485	NA	NA	C Type USB Port
CH043-CU	4.3"	RS-485	NA	Front USB Slot	USB Port
CH070-C	7"	RS-485	RS-485	NA	C Type USB Port
CH070-CU	7"	RS-485	RS-485	Front USB Slot	USB Port
CH100-C	10"	RS-485	RS-485	NA	C Type USB Port

Multi Channel PID Module



1 Channel 2 Channel 4 Channel 8 Channel

MODEL NO	HPK-M1Q2	HPK-M2Q4	HPK-M4Q4	HPE-M8Q9
INPUT	J / K TYPE OF THERMOCOUPLE OR RTD OR ANALOG			
RESOLUTION	0.1 °C			
ACCURACY	± 0.5 % OF FS			
CONTROL ACTION	PID / TWO WAY PID / ON-OFF			
RELAY	RELAY AC 220 V / 30 VDC			
LOGIC LEVEL	ON : 24 VDC OFF : 0.5 VDC / 30 mA, LOAD RESBLANCE > 1K			
ALARM TYPE	HIGH / LOW ALARM / HIGH-LOW			
EXPANSION	ALARM / COOLING OUTPUT MODULE CAN BE EXTENDED			
COMMUNICATION	RS-485/MODBUS COMMUNICATION, AUTO BAUD DETECTION / ETHERNET COMMUNICATION			
	BAUD RATE UPTO 115.2KBPS			
SAMPLING TIME	300 MS			
POWER SUPPLY	24V DC			
CASE SIZE	112 x 109 x 72 MM			

MODEL	SIZE	INPUT	OUTPUT	EXTRA FEATURE	DISPLAY
HPE-M8Q9-TRRR / TSSR	Din-Rail	8 Ch- TC- J/K	8 - Relay / SSR	Alarm X 1	-
HPE-M8Q9-RSSR	Din-Rail	8 Ch- RTD	8 - SSR	Alarm X 1	-
HPE-M8Q9-TAAR	Din-Rail	8 Ch- TC- J/K	8 - Analog	Alarm X 1	-
HPE-M8Q9-ARRR	Din-Rail	8 Ch - Current	8 - Relay	Alarm x 1	-
HPE-M4Q9-TRRR	Din-Rail	4 Ch- TC- J/K	4 - Relay	Alarm X 5	-
HPE-M4Q9-RSRR	Din-Rail	4 Ch- RTD	4 - SSR	Alarm X 5	-
HPK-M1Q2	Din-Rail	1 Ch-TEMP.	1 - SSR	Alarm X 1	-
HPK-M2Q4	Din-Rail	2 Ch-TEMP.	2 - SSR	Alarm X 2	TFT
HPK-M4Q4	Din-Rail	4 Ch-TEMP.	4 - SSR	NA	TFT

Multi Channel CT Module



Current Module

Relay Extension Module

SCR Output Module

INPUT / OUTPUT	CURRENT MEASURE MODULE	RELAY MODULE	SCR MODULE
MEASURING RANGE	0-50.0 A AC	CHANNEL : 8 RELAY	8 CH SCR MODULE
RESOLUTION	0.1 A	HPE EXPANSION MODULE	GATE OUTPUT
ACCURACY	± 0.5 % OF FS	SELECTABLE ALARM MODE	PHASE SHIFT CONTROL
INDICATION	POWER / COMMUNICATION	CONNECTION : C / NO	CONNECTION : G1 / G2
COMMUNICATION	RS-485 / MODBUS COMMUNICATION		
SAMPLING TIME	300 MS		
POWER SUPPLY	24 VDC		
MOUNTING	CHANNEL MOUNTING		
CASE SIZE	112 x 109 x 72 MM		

MODEL	SIZE	INPUT	OUTPUT	EXTRA FEATURE
HPK-4CT	Din-Rail	4 CH- CURRENT		50 Amp CT x 4
HPK-8CT	Din-Rail	8 CH- CURRENT		50 Amp CT x 8
HPK-12CT	Din-Rail	12 CH- CURRENT		50 Amp CT x 12
HPE-CT8-1CT	Din-Rail	4 CH- CURRENT		50 Amp CT x 4
HPE-CT8-2CT	Din-Rail	8 CH- CURRENT		50 Amp CT x 8
HPE-EX-8R	Din-Rail	EXTENSION MODULE	8 Relay	
HPE-PHA8	Din-Rail	EXTENSION MODULE	8 SCR O/P	



Single Phase

INPUT	0-10V DC / 4-20mA
CONTROL	ZERO CROSS OUTPUT, PHASE SHIFT OUTPUT (WITHOUT NEUTRAL)
PHASE SHIFT	≤ 175 DEGREE
MODE	COMBINE TRIGGER MODE OF PULSE AND OPTOCOUPLER
LOAD	SUITABLE FOR RESISTIVE LOAD FOR 1 PHASE / 3 PHASE
WIRING	SUPPORT STAR WITHOUT NEUTRAL / DELTA WIRING
ANTI-INTERFERENCE	STRONG ANTI-INTERFERENCE FUNCTION AND PASS 1800 V COMMON MODE AND DIFFERENTIAL MODE EXPERIMENT
DISPLAY / KEYBOARD	4 DIGIT DISPLAY WITH 4 KEYS TO PROGRAM
INDICATION	POWER INDICATION / RUN INDICATION / ON LINE DISPLAY FOR RUNNING OUTPUT ERROR MESSAGE INDICATION
PROTECTION	STOP-PHASE PROTECTION / SIGNAL LOSS DETECTION / OVER HEAT PROTECTION
OUTPUT	1 RELAY OUTPUT FOR ERROR DETECTION
SOFT-START	SUPPORT SOFT START FUNCTION WITH ADJUSTABLE TIME LIMIT
FUNCTION	SUPPORT POWER LIMIT FUNCTION
COMMUNICATION	RS - 485 (OPTIONAL)
PROGRAMMABLE FUNCTION	MAX. OUTPUT CAN BE LIMIT THROUGH PROGRAMMING
COOLING	NATURAL AND FORCED AIR COOLING AS PER LOAD CAPACITY
SUPPLY	AC 85~265V, 50 HZ
AMBIENT TEMPERATURE	0°C ~ 50°C

3 PHASE DIMENSION SHEET

CURRENT	LOAD (KW) 380V	CASE SIZE (MM)			WEIGHT (KG)	COOLING METHOD
		L	W	H		
50A	34	210	100	175	5	NATURAL COOLING
70A	47.5	210	140	200	5	FORCED AIR COOLING
110A	75	210	140	200	5	FORCED AIR COOLING
175A	119	410	140	200	5	FORCED AIR COOLING

1 PHASE DIMENSION SHEET

CURRENT	LOAD (KW) 220V	CASE SIZE (MM)			WEIGHT (KG)	COOLING METHOD
		L	W	H		
30A	22	55	145	174	2	FORCED AIR COOLING
50A	30	55	145	174	2	FORCED AIR COOLING
50A	34	210	100	175	5	FORCED AIR COOLING

MODEL	INPUT	AMPERE CAPACITY	CONNECTION	DISPLAY	LOAD
TR-SCR-50A-P1	0-10 VDC or 4 -20mA	1P - 50A	1P - 2 Wire	4 Digit Dual Display	Resistive
TR1-4-030-P1	0-10 VDC / 4 -20mA	1P - 30A	1P - 2 Wire	-	Resistive / Inductive
TR1-4-030-P1	0-10 VDC / 4 -20mA	1P - 50A	1P - 2 Wire	-	Resistive / Inductive
TR-SCR-50A-P3	0-10 VDC or 4 -20mA	3P - 50A	3P - 3W (Star / Delta)	4 Digit Dual Display	Resistive
TR-SCR-70A-P3	0-10 VDC or 4 -20mA	3P - 70A	3P - 3W (Star / Delta)	4 Digit Dual Display	Resistive
TR-SCR-110A-P3	0-10 VDC / 4 -20mA	3P - 110A	3P - 3W (Star / Delta)	4 Digit Dual Display	Resistive
TR-SCR-175A-P3	0-10 VDC / 4 -20mA	3P - 175A	3P - 3W (Star / Delta)	4 Digit Dual Display	Resistive
TR-SCR-250A-P3	0-10 VDC / 4 -20mA	3P - 250A	3P - 3W (Star / Delta)	4 Digit Dual Display	Resistive



50 AMP THREE PHASE



175 AMP THREE PHASE

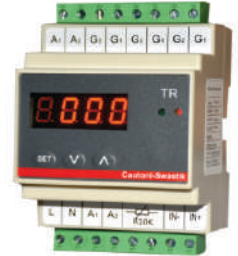


250 AMP THREE PHASE

SCR Trigger Module



3 Phase Trigger Module
Inductive Load



3 Phase Trigger Module
Resistive Load

INPUT	0-10 VDC / 4-20mA OR EXTERNAL POTENTIOMETER
DIGITAL INPUT	START PULSE
FUNCTION	SOFT START / SUPPORT POWER LIMIT / CURRENT LIMIT FUNCTION
CONTROL	ZERO CROSS OUTPUT, PHASE SHIFT OUTPUT (WITH NEUTRAL / WITHOUT NEUTRAL)
LOAD	SUITABLE FOR SINGLE / THREE PHASE RESISTIVE AND INDUCTIVE LOAD
LOAD CAPACITY	SUITABLE UP TO 1000 AMP SCR
WIRING	STAR WITH MIDLINE, STAR WITHOUT MIDLINE, DELTA CONNECTION
ANTI-INTERFERENCE	STRONG ANTI-INTERFERENCE FUNCTION AND PASS 1800V COMMON-MODE AND DIFFERENTIAL MODE EXPERIMENT
DISPLAY / KEYBOARD	4 DIGIT DISPLAY WITH 4 KEYS TO PROGRAM
INDICATION	POWER INDICATION / RUN INDICATION / ON LINE DISPLAY FOR RUNNING OUTPUT ERROR MESSAGE INDICATION
PROTECTION	STOP - PHASE PROTECTION WITH 1 RELAY OUTPUT
MOUNTING	DIN RAIL MOUNTING
SUPPLY	AC 85 ~ 265 V , 50 Hz

MODEL	INPUT	CONNECTION	LOAD	DISPLAY	OUTPUT
TRK-1A-2111	0-10 VDC or 4 -20mA	1P - 2 Wire	Resistive	4 Digit Display	Alarm Contact
TRK-1A-2201	0-10 VDC or 4 -20mA	1P - 2 Wire	Inductive	4 Digit Display	Alarm Contact
TRK-3A-2211	0-10 VDC / 4 -20mA	3P - (3W / 4W)	Resistive	4 Digit Display	Alarm Contact
TRK-3A-4011	0-10 VDC / 4 -20mA	3P - (3W / 4W)	Resistive	4 Digit Display	Alarm Contact
TRK-3A-2601	0-10 VDC / 4 -20mA	3P - (3W / 4W)	Inductive	4 Digit Display	Alarm Contact

Furnace Controller



MODEL NO.	FCX-070-44U
FUNCTION :	1 MASTER + 2 SLAVE CONTROL + SAFETY CONTROLLER (PROFILE) RAMP + SOCK FUNCTION 24 STEP PROFILE + 15 RECIPE FUNCTION RELAY OR ANALOG OUTPUT USB DATA LOGGING
DISPLAY	7" RESISTIVE TOUCH PANEL
INPUT	4 CHANNEL TC/RTD
OUTPUT	8 RELAY / 4 ANALOG + 4 RELAY
FLASH MEMORY	48 MB
DATA LOGGING	1 - 99 MIN
FILE FORMAT	.CSV FILE FORMAT
SOFTWARE	WINDOWS BASED SOFTWARE FOR ANALYSIS OF DATA (OPTIONAL)
POWER SUPPLY	24 V DC
WORKING ENVIRONMENT	0-50 C/ RH: 35 - 85%
SAFETY PROTECTION	IP65 FRONT PANEL
OUTER DIMENSION	200 X 147 X 45 MM
INSTALLATION DIMENSION	187 X 135 MM

MODEL	INPUT	OUTPUT	DATA LOGGING
FCX - 070 - 44U	4 Channel TC 1 Master + 2 Slave + 1 Safety Control	3 Channel Analog + 1 Relay + 1 Alarm	Front USB Data Logging

Hot Runner Temp. Controller



MODEL NO	PF-100
BASIC FUNCTION	AVAILABLE IN SINGLE MODULE AND MULTI ZONE PANEL UP TO 24 ZONE PANEL AVAILABLE
DISPLAY AND OPERATION	RS-485 COM IS STRENGTHENED FUNCTION OPTIONALLY AVAILABLE HIGH BRIGHT DISPLAY FOR TEMPERATURE AND CURRENT INDICATION AUTO / MANUAL / STAND BY FUNCTION FOR EASY OPERATION, SOFT START FUNCTION
PROTECTION	OVER VOLTAGE / FUSE BRAKE / TC BRAKE / TC REVERSE PROTECTION / FRONT POWER ON-OFF SWITCH
SPECIFICATION	
DISPLAY	4 DIGIT HIGH BRIGHT DISPLAY WITH DISPLAY BRIGHTNESS ADJUSTMENT TEMPERATURE AND CURRENT DISPLAY
INPUT	J / K TYPE OF THERMOCOUPLE
RESOLUTION	0.1 / 1°C
CONTROL ACCURACY	± 0.5°C
UNIT	°C / °F (SELECTABLE)
CONTROL ACTION	PID / ON-OFF
OUTPUT	15 A / 230 VAC WITH 15 A FUSE
SOFT START	POWER ON SOFT START (DEFAULT=3 MIN, 20% OUTPUT AND ADJUSTABLE)
PROTECTION	T/C PEN AND T/C REVERSE ALARM, OVER TEMPERATURE PROTECTION, FUSE BRAKE ALARM OVER VOLTAGE PROTECTION (380 V POWER MIS CONNECTION PROTECTION) LOAD BREAK UP PROTECTION, CURRENT LIMIT FEATURE
POWER SUPPLY	230 VAC, 50 / 60 Hz
POWER SUPPLY PROTECTION	15 AMP FUSE (OPTIONAL : 20 A FUSE)
TEMPERATURE	0 - 55°C
HUMIDITY	UP TO 90 % RH

MODEL	SIZE	INPUT	SPECIFICATION	MOUNTING
PF-100	LCD Display	J / K Type TC	Output : 15 Amp / 230 Vac, 20a Fuse Protection	Card Type
HRTC-1P	1 Zone HRTC with Panel	J / K Type TC	HRTC With Panel Box, 3 Meter Cable With Connectors	Control Panel

HRTC PANEL BOX AVAILABLE UP TO 24 ZONE



2 ZONE HRTC



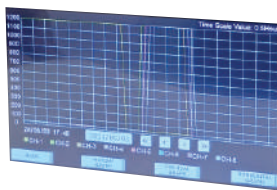
6 ZONE HRTC



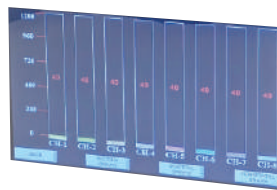
SPR-800

DISPLAY	7" TFT RESISTIVE TOUCH PANNEL MULTI DISPLAY FUNCTION TREND GRAPH, VERTICAL - HORIZONTAL BAR DISPLAY HISTORY DATA, ALARM STATUS MULTI USER ACCESS LEVEL
INPUT	8 / 16 CHANNELS TEMPERATURE & ANALOG
OUTPUT	8 RELAY ALARM OUTPUT
COMMUNICATION	RS 485 COMMUNICATION WITH WINDOWS BASE SOFTWARE
DATA STORAGE	48 MB FLASH MEMORY
DATA LOGGING TIME	USB FLASH DRIVE (OFFLINE - CSV FILE)
INDICATION	RS 485 WITH WINDOW BASE SOFTWARE (OPTIONAL)
DATA ACQUISITION	MINIMUM 1 SEC. / MIN. (ADJUSTABLE)
PROTECTION	8 RELAY OUTPUT WITH ALARM LOG DISPLAY, POWER ON- OFF LOGGING, USER ACCESS LOG REPORT
SOFTWARE	21 CFR BASED SOFTWARE FOR DATA LOGGING AND ANALYSIS OF DATA HISTORY ANALYSIS, ALARM GENERATION CHART, HISTORIC REPORT GENERATION USER LOGGING REPORT, 3 ACCESS LEVEL FOR USER POWER FAIL DATA PROTECTION
SIZE	200 x 147 MM
PANEL CUTOUT	187 x 135 MM
SUPPLY	24 VDC SMPS SUPPLY

MODEL	CHANNEL	INPUT	OUTPUT	DATA LOGGING
SPR - 800 - T8	8 Channel	TEMP.	8 Relay	Front USB Data Logging
SPR - 800 - T4A4	8 Channel	4 CH : TEMP, 4 CH : ANALOG	8 Relay	Front USB Data Logging
SPR - 1600 - T16	16 Channel	TEMP.	16 Relay	Front USB Data Logging
SPR - 1600 - T8A8	16 Channel	8 CH : TEMP, 8 CH : ANALOG	16 Relay	Front USB Data Logging



ONLINE GRAPH



VERTICAL BAR GRAPH



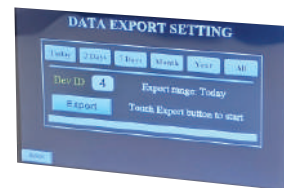
DATA LOGGING WINDOW



ALARM HISTORY



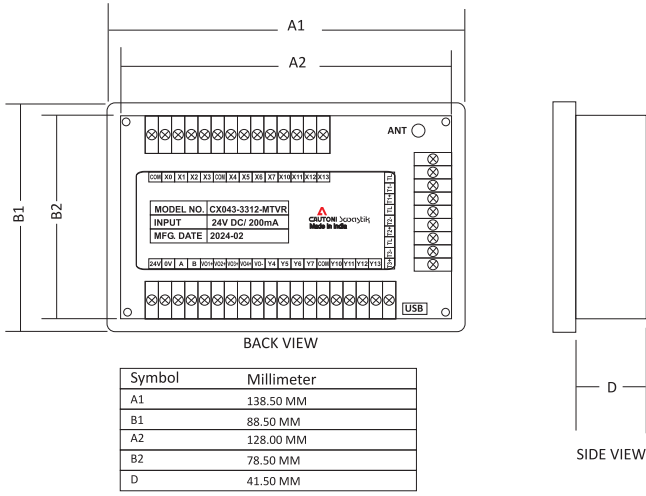
USER SETTING WINDOW



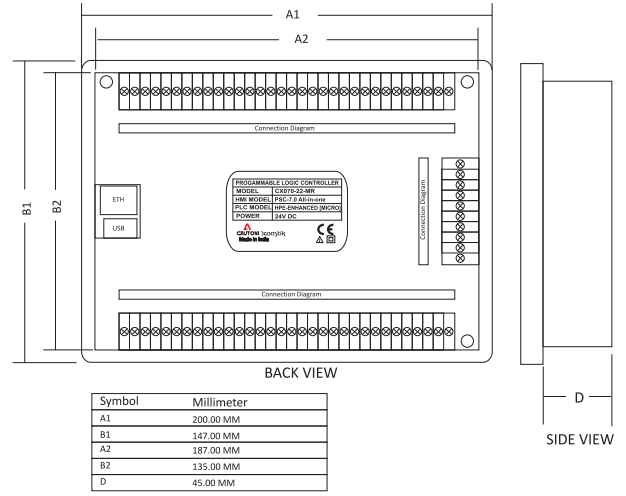
DATA EXPORT MODULE



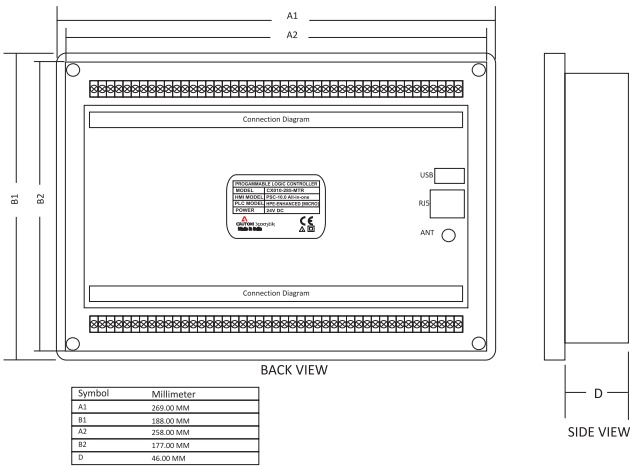
4.3" HMI INBUILT PLC / HMI



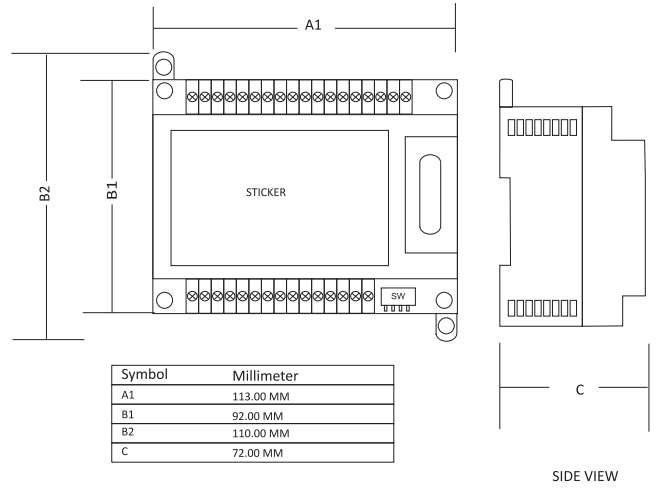
7" HMI INBUILT PLC / HMI



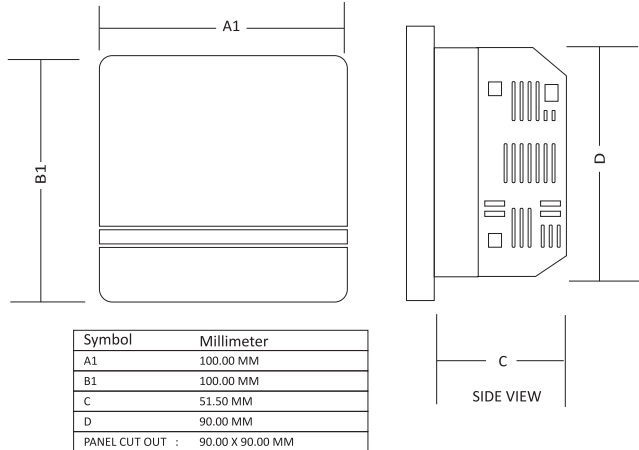
10" HMI INBUILT PLC / HMI



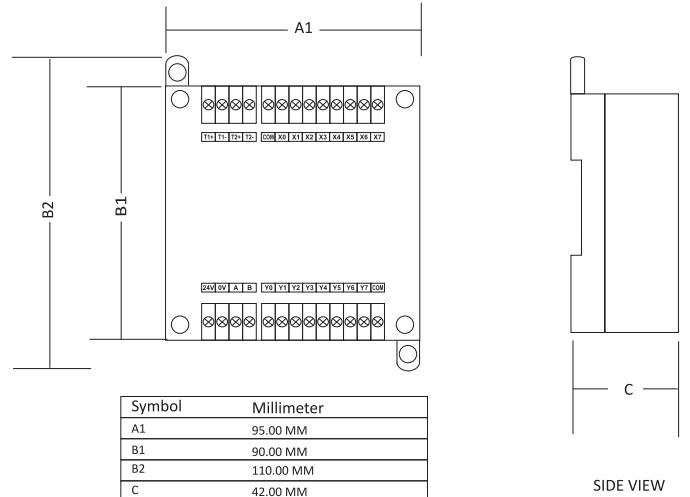
HPE



96 X 96



MPC Channel Mount





4.3 INCH

MODEL	INPUT DIGITAL	INPUT TC / ANALOG	OUTPUT HIGH SPEED	OUTPUT RELAY	OUTPUT TRANSISTOR	OUTPUT ANALOG	COMPORT RS-485	DOWNLOAD PORT	USB HOST
CX043-22-MR	8	0	0	8	0	0	1	TYPE C	NO
CX043-22-MQ	8	0	0	0	8	0	1	TYPE C	NO
CX043-222-MTR-T2	8	2	0	8	0	0	1	TYPE C	NO
CX043-333-MTR-T3	12	3	0	12	0	0	1	TYPE C	NO
CX043-311-MHR	12	0	4	4	0	0	1	TYPE C	NO
CX043-3212-MTHR-T2	12	2	4	8	0	0	1	TYPE C	NO
CX043-3321-MTRA-T3-U4	12	3	0	8	0	4	1	TYPE C	NO
CX043-U-322-MTR-T2	12	2	0	8	0	0	1	TYPE C	YES

7 INCH

MODEL	INPUT DIGITAL	INPUT TC / ANALOG	OUTPUT HIGH SPEED	OUTPUT RELAY	OUTPUT TRANSISTOR	OUTPUT ANALOG	COMPORT RS-485	DOWNLOAD PORT	USB HOST
CX070 -22-MR	8	0	0	8	0	0	1	TYPE C	NO
CX070 -44-MR	16	0	0	16	0	0	1	TYPE C	NO
CX070 -413-MHR	16	0	4	12	0	0	1	TYPE C	NO
CX070 -42141-MTHRA-T2-U4	16	2	4	16	0	4	1	TYPE C	NO
CX070 -4313-MTHR-T3	16	3	4	12	0	0	1	TYPE C	NO
CX070 -646-MTR-T4	24	4	0	24	0	0	1	TYPE C	NO
CX070 -6441MTRV-T4-V4	24	4	0	16	0	8	1	TYPE C	NO
CX070 -2832-MTRVC-T8-V8	8	8	0	12	0	8	2	TYPE C	NO
CX070-U -243-MTR-T4	8	4	0	12	0	0	1	TYPE C	YES
CX070-U -2433-MTRA-T4-V12	8	4	0	12	0	12	1	TYPE C	YES
CX070-615-MHR	24	0	4	20	0	0	1	TYPE C	NO
CX070 -2221-MTRA-T2-U4	8	2	0	8	0	4	1	TYPE C	NO
CX070 -333-MTR-T3	12	3	0	12	0	0	1	TYPE C	NO

10 INCH

MODEL	INPUT DIGITAL	INPUT TC / ANALOG	OUTPUT HIGH SPEED	OUTPUT RELAY	OUTPUT TRANSISTOR	OUTPUT ANALOG	COMPORT RS-485	DOWNLOAD PORT	USB HOST
CX100 -243-MTRC-T4	8	4	0	12	0	0	2	TYPE C	NO
CX100 -212-MHRC	8	0	4	8	0	0	2	TYPE C	NO
CX100 -615-MHRC	24	0	4	20	0	0	2	TYPE C	NO
CX100 -648-MTRC-T4	24	4	0	32	0	0	2	TYPE C	NO
CX100 -64142-MTHRAC-T4-U8	24	4	4	16	0	8	2	TYPE C	NO
CX100-686-MTRC-T8	24	8	0	24	0	0	2	TYPE C	NO
CX100-21272-MTRVC-T12-V8	8	12	0	28	0	8	2	TYPE C	NO
CX100-21671-MTRVC-T16-V4	8	16	0	28	0	4	2	TYPE C	NO

**SWASTIK AUTOMATION & CONTROL
CAUTIONI-SWASTIK INSTRUMENTS (I) PVT LTD**



ISO 9001:2008



CE Certified



Registered

Office : D/60, Vivekanand Ind. Estate, Nr. Rakhial Cross Road,
Rakhial, Ahmedabad - 23.

Works : D-53/54, Vivekanand Ind. Estate, Nr. Rakhial Cross Road,
Rakhial, Ahmedabad - 23.

Mobile : +91-98984 70068 / 97236 96669

E-mail : response@swastikautomation.com | swastikautomation@gmail.com

Web : www.swastikautomation.com | www.cautoniswastikinstrument.com

Swastik Automation & Control

