

# Product Overview



# Baumer Technologies India Pvt. Ltd.

Baumer Technologies India Pvt. Ltd. is in the business of Process Instrumentation since 1989. We have very wide spread domestic distribution network. In addition; our qualified & technical team is able to offer solutions to direct customers.

Baumer Technologies have state of art manufacturing facility in Vapi, Gujarat. Plant have inhouse Bourdon tube manufacturing facility. Baumer Technologies have its own NABL accredited calibration Lab.

Our manufacturing range includes Pressure Gauges, Temperature Gauges, RTD's, Thermocouples, Thermowells, Pressure Switches, Needle Valves, Manifolds, Instrumentation Tube Fittings, Level Indicators, Level Switches, Pressure Transmitter, Temperature Transmitter, Level Transmitter and allied accessories. We are able to provide you with customized solutions.

## Baumer Group

The Baumer Group has its headquarters in Frauenfeld, Switzerland and employs around 2900 people worldwide, with 39 locations in 19 countries. In the past decades Baumer has established an impressive reputation as a supplier of innovative and high class quality sensor products for applications in factory and process automation.

Baumer has a broad portfolio of standard products all based on a multitude of sensor technologies. Customers benefit from internationally comprehensive consultation and reliable service. In close cooperation with them, Baumer develops specific solutions with distinct advantages in cost and performance. The established Baumer corporate culture places special emphasis on the customer and their needs. Baumer's considerable competence in application, comprehensive consultation by the sales specialists as well as the outstanding service makes Baumer a reliable partner in the sensor field. Company has 5 business areas- Sensor Solutions, Motion Control, Vision Technologies, Process Instrumentation and Gluing Systems.

**ISO 9001:2015**  
**ISO 14000:3015**  
**ISO 45001:2018**  
**CE 0045 Certified**



## Content :

Pressure Measurement	
Pressure gauges	4
Pressure switches	8
Diaphragm seals	10
Accessories	12
Instrumentation Fittings & Condensate Pot	13
Instrumentation Valves and Manifolds	14
Temperature Measurement	
Temperature gauges and switch	16
RTDs	17
Thermocouples	18
Thermowells	19
Level Instruments	20



# The Original Bourdon

History and Innovation

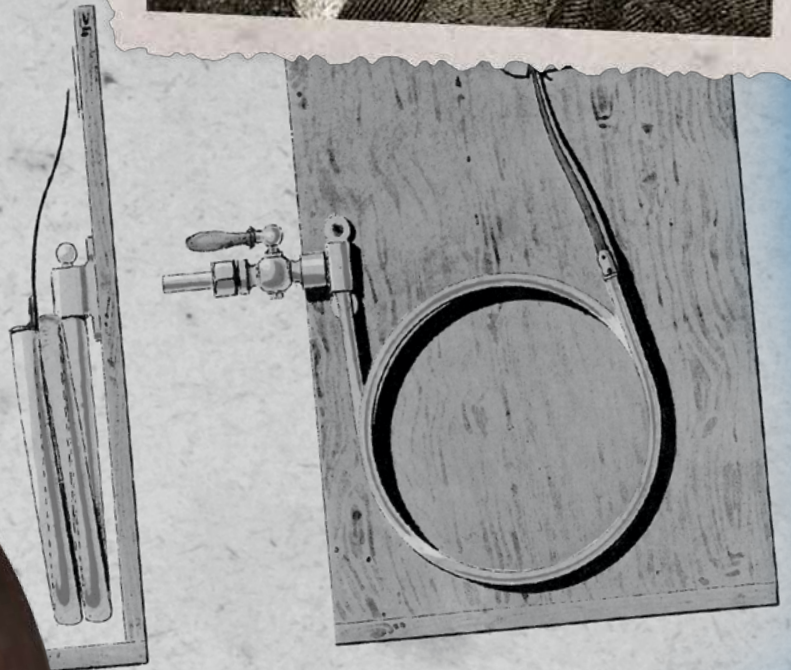
“ The Best Way Towards A Bright Future Is A Bright Past.”

When he discovered the manometer, Eugène Bourdon was searching for improvement but found a solution that would endure for centuries. Our engineers, much like Bourdon himself, continually find themselves facing challenges: Know the unknown and continuously optimize to find a solution.



*Fevrier 1849.*  
*Premier essai de Manomètre*  
*métallique à tube méplat et*  
*courbé.*

*C'est ce manomètre qui a été*  
*appliqué en février 1849 à la*  
*chaudière de la Compagnie des*  
*Indes avant que M. Bourdon*  
*te sien en France.*  
*Le tube à*  
*fabrication par*  
*d'instrument*



# Pressure Measurement



- All Stainless Steel gauge
- DIN case type stainless steel gauge
- Economic gauge
- Process Pressure Gauges
- Commercial gauges
- Industrial gauges



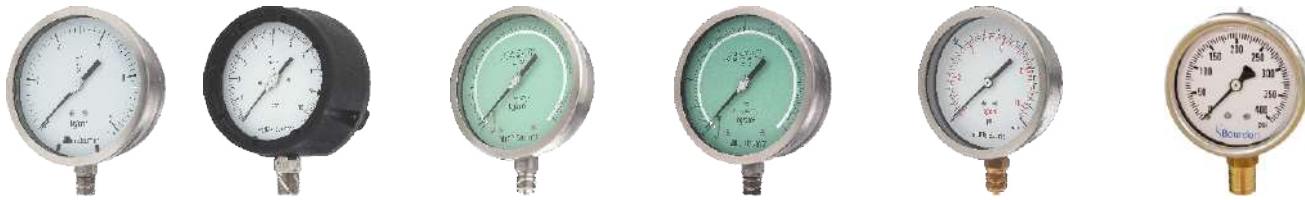
Model	AD	AL	BE	BV	MPG
DN	50, 63 mm	100, 125, 150, 200 & 250 mm	63, 100 & 150 mm	100 & 150 mm	130 mm (4" 1/2)
Pressure range	50 mm : -1...0 & 0...400 bar 63 mm : -1...0 & 0...1000 bar	-1 ... 0 & 0 ...1600 bar	63 mm : -1...0 & 0...1000 bar 100 & 150 mm : -1...0 & 0...1600 bar	-1...0 & 0...70 bar	-1...0 & 0...600 bar
Accuracy class	50 mm : 2.5 63 mm : 1.6	1.0, (Optional : 0.5)	63 mm : 1.6 100 & 150 mm : 1.0 (Optional : 0.5)	1.6	Grade 2A (according ASME B40.100, ± 0.5%)
Case material & type	AISI 304 SS (Optional : AISI 316 SS), Bayonet / Rolling	AISI 304 SS (Optional : AISI 316 SS), Bayonet	AISI 304 SS (Optional : AISI 316 SS), Snap Lock	AISI 304 SS, Bayonet	PBT (Fire retardant, UL94 V0)
Sensing element material	AISI 316L SS	AISI 316L SS, (Optional : Monel)	AISI 316L SS, (Optional : Monel) (For NS100 & 150mm)	AISI 316L SS	Stainless steel 1.4404 (AISI 316L)
Process connection material	AISI 316L SS	AISI 316L SS, (Optional : Monel)	AISI 316L SS, (Optional : Monel) (For NS100 & 150mm)	AISI 304 SS	Stainless steel 1.4404 (AISI 316L)
Process connection	50 & 63 mm : 1/8" BSP(M), 1/8" NPT(M), 1/4" BSP(M), 1/4" NPT(M)	3/8" BSP(M), 1/2" BSP(M) & 1/2" NPT(M)	63 mm : 1/4" BSP(M), 1/4" NPT(M), 100 & 150 mm : 1/2" BSP(M) & 1/2" NPT(M)	3/8" BSP(M), 1/2" BSP(M) & 1/2" NPT(M)	G 1/2 & 1/2" NPT
Type of mounting	50 mm : 2, 4 & 13 63 mm : 1, 2, 3,4,5,12,13	1, 2, 3, 4*, 5, 6, 9 & 11** *(For 100mm only) **(For NS100 to 150mm only)	1, 2, 3, 4, 5 & 9	2	1,2
Protection class	IP 65 (Optional : IP 66/IP 67/IP 68)	IP 65 (Optional IP 66 / IP 67 / IP 68)	IP 65 (Optional : IP 66 / IP 67)	IP 65	IP 67
Approval		IBR, CE (for NS 100 & 150 mm) up to 1000 bar			Fire retardant material & ROHS compliant
Reference standard	EN 837-1	EN 837-1 (For NS 100, 150 & 250 mm), ASME B 40.100 for NS 125 mm.	EN 837-1	EN 837-1	ASME B40.100

## Mountings

- |  |                                      |   |
|--|--------------------------------------|---|
| 1 Wall / surface / projection mounting with bottom entry | 2 Direct bottom entry                | 3 Direct lower back entry                   |
| 4 Direct center back entry                               | 5 Lower back entry with front flange | 6 2" pipe / yoke mounting with bottom entry |
| 9 Lower back entry with mounting bracket                 | 11 Bottom entry with front flange    | 12 Center back entry with front flange      |
| 13 Center back entry with mounting bracket               |                                      |   |

# Pressure Measurement

- Solid front
- Polypropylene case type
- Test gauge
- Stainless Steel with brass internal



AI	AH	AR	AJ	AT	MAX
100 & 150 mm	4 1/2"	150,200 & 250 mm	150 mm	50, 63 & 100 mm	2.5" & 4"
-1 ... 0 & 0 ... 1600 bar	-1 ... 0 & 0 ... 1600 bar	-1 ... 0 & 0 ... 1000 bar	-1 ... 0 & 0 ... 1000 bar	50 mm : -1...0 & 0...280 bar, 63, & 100 mm : -1 ... 0 & 0 ... 400 bar	-1...0 & 0...1000 bar
1.0 (Optional : 0.5)	0.5	0.25	0.25	40 & 50 mm : 2.5, 63, & 100 mm : 1.6	2.5" : 1.6 4" : 1.0
AISI 304 SS (Optional : AISI 316 SS), Bayonet, Solid front	Polypropylène, Solid Front	AISI 304 SS (Optional : AISI 316 SS), Bayonet	AISI 304 SS (Optional : AISI 316 SS), Bayonet, Solid Front	AISI 304 SS (Optional : AISI 316 SS), Bayonet / Rolling	Stainless Steel
AISI 316L SS, (Optional : Monel)	AISI 316L SS, (Optional : Monel)	Beryllium Copper	Beryllium Copper	Copper Alloy	Copper Alloy - pressures <6,000 psi Stainless Steel - pressures >6,000 psi
AISI 316L SS, (Optional : Monel)	AISI 316L SS, (Optional : Monel)	AISI 316L SS	AISI 316L SS	Copper Alloy	Copper Alloy
3/8" BSP(M), 1/2" BSP(M) & 1/2" NPT(M)	1/4" NPT(M), 1/2" BSP(M) & 1/2" NPT(M)	1/4" NPT(M), 1/2" BSP(M) & 1/2" NPT(M)	1/4" NPT(M), 1/2" BSP(M) & 1/2" NPT(M)	50 & 63 mm : 1/8" BSP(M), 1/8" NPT(M), 1/4" BSP(M), 1/4" NPT(M), & 100 mm : 1/4" BSP(M), 1/4" NPT(M), 3/8" BSP(M) & 3/8" NPT(M)	1/4" NPT, 1/4" BSP, 1/2" NPT, 1/2" BSP
1, 2 & 6	1, 3 & 5	1, 2, 3, 5 & 9	1 & 2	50 mm : 2, 4 & 13 63 mm : 1, 2, 4, 5, 12 & 13 100 mm : 1, 2, 3, 5 & 9	1,2,3,5,9
IP 65 (Optional:IP 66/IP 67/IP 68)	IP 65 (Optional : IP 66 / IP 67)	IP 65 (Optional : IP 66 / IP 67)	IP 65 (Optional : IP 66 / IP 67)	IP 65 (Optional : IP 66 / IP 67)	IP 65
EN 837-1	ASME - B 40.100	EN 837-1	EN 837-1	EN 837-1	EN 837-1

## Mountings

- |  |  |   |
|--|--|---|
| 1 Wall / surface / projection mounting with bottom entry | 2 Direct bottom entry                  | 3 Direct lower back entry                   |
| 4 Direct center back entry                               | 5 Lower back entry with front flange   | 6 2" pipe / yoke mounting with bottom entry |
| 9 Lower back entry with mounting bracket                 | 12 Center back entry with front flange | 13 Center back entry with mounting bracket  |

# Pressure Measurement



- Electric contact type
- Sanitary type
- Homogenizer type



Model	BI	BJ	AY	AZ	MAG
DN	100 mm	100 & 150 mm	50 & 63 mm	100 mm	2.5" & 4"
Pressure range	1.6 ... 1600 bar	1.6 ... 1600 bar	-1 ... 2 & 2 ... 40 bar	160, 250, 400, 600 bar	-30"HG...0 & 0...15,000 psi
Accuracy class	1.0	1.0	1.6	1.6	2.5": 1.6 4": 1
Case material & type	AISI 304 SS (Optional : AISI 316 SS), Bayonet, High Case Version	AISI 304 SS (Optional : AISI 316 SS), Bayonet	AISI 304 SS (Optional : AISI 316 SS), Bayonet	AISI 304 SS (Optional : AISI 316 SS), Bayonet	Forged Brass (Case & socket in one piece) Bezel Sleeve : Gold-plated ABS (2.5") Chrome-plated brass ring (4")
Sensing element material	AISI 316L SS, (Optional : Monel)	AISI 316L SS, (Optional : Monel)	AISI 316L SS (Diaphragm)	AISI 316L SS (Diaphragm)	Copper Alloy
Process connection material	AISI 316L SS, (Optional : Monel)	AISI 316L SS, (Optional : Monel)	AISI 316 SS (Optional : AISI 316L)	AISI 316 SS	Copper Alloy
Process connection	1/4" NPT(M), 1/2" BSP(M) & 1/2" NPT(M)	1/4" NPT(M), 1/2" BSP(M) & 1/2" NPT(M)	1 1/2", 2" & 2 1/2" Clamp	Flange, Without Flange & 1 1/4" BSP(F)	1/4" NPT & 1/2" NPT
Type of mounting	1, 2 & 3	1, 2, 3, 5 & 9	2 & 4	2	2,3
Protection class	IP 65 (Optional : IP 66 / IP 67)	IP 65 (Optional : IP 66 / IP 67)	IP 65 (Optional : IP 66 / IP 67)	IP 65 (Optional : IP 66 / IP 67)	IP 66
Reference standard	EN 837-1	EN 837-1	EN 837-3	EN 837-3	EN 837-1
Others	CE approved Electrical Contacts	CE approved Electrical Contacts		CE approved Electrical Contacts	

## Mountings

- |  |                                      |  |
|--|--------------------------------------|--|
| 1 Wall / surface / projection mounting with bottom entry | 2 Direct bottom entry                | 3 Direct lower back entry                |
| 4 Direct center back entry                               | 5 Lower back entry with front flange | 9 Lower back entry with mounting bracket |

# Pressure Measurement

- Differential gauge
- Double Diaphragm
- Single Diaphragm
- Piston Operated
- Bellow operated
- Capsule type



AQ	BF	BQ	BA	AF	AP
100 & 150 mm	63, 100 & 150 mm	150 mm	100 & 150 mm	63, 100, 125 & 150 mm	100 & 150 mm
6000 mmWC .... 40 bar	2500 ....6000 mmWC & 1.....10 bar	4000 .....6000 mmWC & 1.....6 bar	600 mmWC, static 10 kg/cm <sup>2</sup> 1000 mmWC to 2500 mmWC, static 40 kg/cm <sup>2</sup> 4000 mmWC & above, static 60 kg/cm <sup>2</sup>	-6000 .... -250 mmWC & 250.....6000 mmWC	-6000...-250 mmWC, 250...6000 mmWC & -1...9 bar
1.6 (Ascending)	2.0 (Ascending)	1.0 for 1 to 6 bar 1.6 for 4000 to 6000mmWC	2.5 (Ascending)	1.6	1.6
AISI 304 SS (Optional : AISI 316 SS), Bayonet	AISI 304 SS (Optional : AISI 316 SS), Bayonet	AISI 304 SS (Optional : AISI 316 SS), Bayonet	AISI 304 SS (Bayonet Type)	AISI 304 SS, (Optional : AISI 316 SS), Bayonet	AISI 304 SS, (Optional : AISI 316 SS), Bayonet
AISI 316L SS (Double Diaphragm), (Optional : Monel)	Teflon, Ceramic magnet & SS spring	AISI 316L SS (Bellow)	AISI 304 SS, AISI 316L SS, AISI 316 SS (optional : Monel)	AISI 316 SS (Capsule)	AISI 316L SS (Diaphragm), (Optional : Hastelloy C, Monel)
AISI 316 SS, (Optional AISI 316L, AISI 304 SS, Monel)	AISI 316 SS, (Optional : Monel)	AISI 316L SS	AISI 316 (Optional : Monel)	AISI 316L SS	AISI 316 SS, (Optional : AISI 316L SS, Hastelloy C, Monel)
1/4" NPT (F), 1/2" BSP(M) & 1/2" NPT(M)	1/4" NPT(F), 1/4" BSP(F) & 1/2" NPT(M)	1/2" BSP(M) & 1/2" NPT(M)	1/4" NPT (F) x 2 Nos. (Others through adaptor)	1/4" BSP(M), 1/4" NPT (M), 1/2" BSP(M) & 1/2" NPT(M)	1/2" BSP(M), 1/2" NPT(M) & Flanged
1, 2, 6 & 12* (*Suitable for HP chamber only)	2, 3 & 10	1 & 6	1,2,6,12	63 mm : 1, 2, 4 & 13 100,125, 150 mm : 1, 2, 3, 5 & 9	2 & 6
IP 65 (Optional : IP 65 / IP 67)	IP 65	IP 65 (Optional : IP 65 / IP 67)	IP 65	63 mm : IP 55 100, 125, 150 mm : IP 65 (Optional : IP 66/IP 67/IP 68)	IP 65 (Optional : IP 66 / IP 67)
EN 837-3		EN 837-3	EN 837-3	EN 837-3	EN 837-3
CE approved Electrical Contacts	Glycerin filled option available	Glycerin filled option available	CE approved Electrical Contacts		CE approved Electrical Contacts

## Mountings

- |  |                                      |  |
|--|--------------------------------------|--|
| 1 Wall / surface / projection mounting with bottom entry | 2 Direct bottom entry                | 3 Direct lower back entry                  |
| 4 Direct center back entry                               | 5 Lower back entry with front flange | 6 2" pipe/ yoke mounting with bottom entry |
| 9 Lower back entry with mounting bracket                 | 10 In line entry                     | 12 Center back entry with front flange     |
| 13 Center back entry with mounting bracket               |                                      |  |

# Pressure Measurement

## Pressure Switches

- Bellow type
- Adjustable Dead Band type
- Weather proof
- Phosphor bronze / Stainless Steel



Model	UT	CNI	ZPDW,ZPPW	ZDDW
Type	Bellow	Adjustable Dead Band - Diaphragm	Diaphragm / Piston	Diaphragm, Differential
Pressure range	0.....30bar	-1 ... 0 & 0...40 bar	ZPDW : -1 ... 0 & 0 ... 40 bar ZPPW : 5 .....600 bar	3 ... 600 mbar 6 0.1 ... 25 bar
Repeatability (% FSR)	2.0	1.0	ZPDW : 0.5 ZPPW : 1.0	0.5
Type, no. of switches	Microswitch SPDT 1	Microswitch SPDT 1 or 2	Microswitch SPDT 1 or 2	Microswitch SPDT 1 or 2
Switch rating	15 A, 220 VAC & 10 A, 24 VDC	15 A, 250 VAC & 0.4 A, 110 VDC	15 A, 250 VAC, 0.2 A, 220 VDC"	15 A, 250 VAC, 0.2 A, 220 VDC
Sensing element material	Phosphor Bronze	AISI 316L SS	AISI 316 SS (Optional: AISI 316L SS)	AISI 316L SS
Process connection	1/4" BSP / NPT	3/8", 1/2" BSP / NPT	3/8", 1/2" BSP / NPT	3/8", 1/2" BSP / NPT
Housing / body material	Steel (plated) with plastic cover	Die Cast Aluminum	Die Cast Aluminum	Die Cast Aluminum
Protection class	IP 32	IP 66	IP 66	IP 66
Accessories			Snubber, Chemical seal, Cable Gland	Snubber Chemical seal, Cable Gland



# Pressure Measurement

## Pressure Switches



- Differential Pressure Switch
- Explosion proof



Model	UDPR	ZPDX	ZDDX	ZPPX
Type	Bellow	Diaphragm	Diaphragm, Differential	Piston
Pressure range	0... 4 bar / 58 psi	-1 ... 0 & 0 ... 40 bar	3 ... 600 mbar & 0.1 ... 25 bar	5 .....600 mbar
Repeatability (% FSR)	+ 2% F. S.	0.5	0.5	1.0
Type, no. of switches	Microswitch SPDT 1	Microswitch SPDT 1 or 2	Microswitch SPDT 1 or 2	Microswitch SPDT 1 or 2
Switch rating	15 A, 220 VAC & 10 A, 24 VDC	15A, 250VAC, 0.2A, 220 VDC	15 A, 250 VAC, 0.2 A, 220 VDC	15A, 250VAC, 0.2A, 220 VDC
Sensing element material	Phosphor bronze bellows	AISI 316 SS (Optional: AISI 316L SS)	AISI 316L SS	AISI 316 SS (Optional: AISI 316L SS)
Process connection	3/8" BSP (M), 1/4" Flared	3/8", 1/2" BSP / NPT	3/8", 1/2" BSP / NPT	3/8", 1/2" BSP / NPT
Housing / body material	Steel (plated) with plastic cover	Die Cast Aluminum	Die Cast Aluminum	Die Cast Aluminum
Protection class	IP 32	W/P to IP 65 & Explosion proof, Class 1, Div. 2, Gas Groups B, C & D (ExII2G, Eex d IIC T6)	W/P to IP 65 & Explosion proof, Class 1, Div. 2, Gas Groups B, C & D (ExII2G, Eex d IIC T6)	W/P to IP 65 & Explosion proof, Class 1, Div. 2, Gas Groups B, C & D (ExII2G, Eex d IIC T6)
Accessories	Mounting bracket with screws	Snubber, Chemical seal, Cable Gland	Snubber, Chemical seal, Cable Gland	Snubber, Chemical seal, Cable Gland

# Pressure Measurement

## Diaphragm Seal



- Heavy duty mini seal
- Direct coupled type
- Slip ring coupled type
- Screwed type



Model	DG	DB	DO	DF
Type	Heavy duty mini seal	Direct coupled	Slip ring coupled	Screwed flush type
Pressure range	S11 : -1 ... 0 & 0 ... 4 bar S12 : 6 ... 70 bar S13 : 100 ... 400 bar S14 : 250 ... 600 bar	S06 : -1 ... 0 & 0 ... 70 bar S07 : 100 ... 400 bar	DT 1 : 40 ... 60 bar DT2 : -1 ... 0 bar & 0 ... 40 bar	4...600 bar
Wetted parts	AISI 316 SS & AISI 316L	AISI 316 SS & AISI 316L	AISI 316 & AISI 316L	AISI 316L SS
Operating temperature	-40°C to 200°C or as per fill fluid	-40°C to 200°C or as per fill fluid	-40°C to 200°C as per fill fluid	-40°C to 200°C or as per fill fluid
Process connection	1/4" NPT (M), 1/2" BSP(M) & 1/2" NPT(M)	1/4" NPT (M) 1/2" BSP(M) & 1/2" NPT(M)	1/4" NPT (M) 1/2" BSP(M) & 1/2" NPT(M)	1/2" BSP/NPT (M) 1" BSP/NPT (M) 1 1/2" BSP/NPT (M) 2" BSP/NPT (M) 3/4" BSP (M) (Standard) 3/4" NPT (M)
Special material	Monel, Hastelloy C	Monel, Hastelloy C, Titanium, Tantalum	Monel, Hastelloy C, Titanium, Tantalum	Monel, Hastelloy C

# Pressure Measurement

## Diaphragm Seal

- Direct flanged flushed type
- Direct flanged insert type
- Flange "I" section type
- Flush Diaphragm, sanitary type
- Sanitary seal, clamp type
- Flushing ring



DJ	DK	DI	DE/DH	EE
Flushed flanged	Insert flanged	Flange - "I" section type	Flush diaphragm, sanitary type	Flushing Ring
-1 bar & 0... 250 bar	S26 : -1... 0 bar & 0 to 250 bar (Non PTFE Lined) S27 : -1... bar & 0 to 40 bar (PTFE Lined)	S21: -1... 0 bar & 0 ... 70 bar S22: 100 bar ... 400 bar S23: -1 ... 0 bar & 0 .. 70 bar	-1... Bar 0 & 0... 40 bar	As per Flange Rating reference to ANSI B16.5 & DIN standard
AISI 316 SS & AISI 316L	AISI 316 SS & AISI 316L	AISI 316 SS & AISI 316L	AISI 316L SS	AISI 316 SS / AISI 316L
-40°C to 200°C or as per fill fluid	-40°C to 200°C or as per fill fluid	Max 150°C for PTFE lined -40°C to 200°C for without PTFE lined	-10°C to 180° C (FDA) or as per fill fluid	-40 °C... +300 °C
40 NB(1 1/2") & above	25 NB(1") & above	15 NB (1/2") to 25 NB (1"), DIN / BS / ANSI / JIS others on request	1", 1½" & 2" as per DIN 11851, DIN 32676, SMS 1147`	Suitable to Flange size 1/2" to 5" 5" as per ANSI B16.5
Monel, Hastelloy C, Titanium, Tantalum	Monel, Hastelloy C, Titanium, Tantalum	Hastelloy' C', Silver*, Titanium, Tantalum, Monel	On request	AISI 316L SS, Monel, Hastelloy C, Titanium, Tantalum

# Pressure Measurement

## Accessories



- Gauge Cock
- Overload Protector
- Pulsation dampener
- Siphon



Model	EC	ED	EG	EH
Type	Gauge Cock - 2 way, 3 way	Overload Protector (Gauge saver)	Pulsation dampener (Snubber)	Siphon (Coil type, Pig tail type & U type)
Pressure rating	100 bar	E01 : 0.6 .....0.8 bar E02 : 1 .....400 bar	Up to 400 bar	260 bar max
Process connection	1/4", 3/8" & 1/2" BSP / NPT	1/4" NPT (M x F), 1/2" BSP (M x F & 1/2" NPT (M x F)	1/4" NPT (M x F), 1/2" BSP (M x F) & 1/2" NPT (M x F)	1/4", 3/8" & 1/2" BSP / NPT
Wetted parts	AISI 316 SS, AISI 304 SS	AISI 316 SS, AISI 316L SS, Monel, Hastelloy C	AISI 316 SS, AISI 316L SS, Monel, Hastelloy C	AISI 304 SS, AISI 316 SS, AISI 316L SS, CS
Working temperature	Up to 180°C	-20°C to 120°C	- 20 °C to 120 °C	Up to 400°C

# Instrumentation Fittings & Condensate Pot

- Double Compression Tube Fittings
- Double Block and Bleed Valve
- Air Header
- Condensate Pot



Model	Double Compression Tube Fittings	DBB	WCP	AHDM
Type	Straight, Elbow, Tee & Cross Conectors	Double Block and Bleed Valve	Condensate Pot	Air header
Pressure rating	3000 # (optional : 6000 #)	6000 psi (Optional 10000 psi)	Sch. 40, Sch. 80, Sch. 160	Sch. 40, Sch. 80
Process connection	1/8" to 1"	1/4" to 3/4"	Pipe Sizes in 2", 3" & 4"	Flanged, Threaded
Wetted parts	AISI 316 SS, AISI 316L SS, Duplex, Super Duplex, Inconel 625, Hastelloy, Monel	AISI 316 SS, AISI 316L SS, Duplex, Super Duplex, Inconel 625, Hastelloy, Monel	AISI 316 SS, AISI 316L SS, Duplex, Super Duplex, Inconel 625, Hastelloy, Monel	CS, AISI 316 SS, AISI 316L SS, AISI 304 SS
Working temperature	Up to 400°C	Up to 240°C (PTFE Packing) Up to 550°C (Graphite Packing)	Up to 400°C	Up to 400°C
Standard Tests	Visual & Dimensional Check Hydro Test	Visual & Dimensional Check Hydro Test	Visual & Dimensional Check Hydro Test	Visual & Dimensional Check Hydro Test
Option Tests	PMI TEST NACE MR 0175 / ISO 15156 IGC TEST	PMI TEST NACE MR 0175 / ISO 15156 IGC TEST	PMI TEST NACE MR 0175 / ISO 15156 IGC TEST	PMI Test NACE MR 0715/ ISO 15156 IGC Test

# Instrumentation Valves and Manifolds

## Valves



- Needle Valve - hard seat
- Needle Valve - Compression end
- Block and Bleed valve
- Ball valve

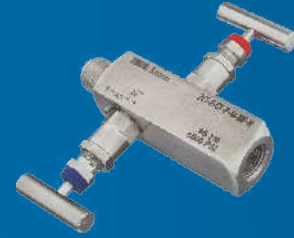


Model	NV4	CET	GV8	BV4
Type	Standard Needle valve	Needle valve with compression fitting	Gauge valve	Ball valve
Mounting	Screwed	Tube fitting	Screwed	Screwed
Pressure rating	6000 psi (Optional : 10000 psi)	6000 psi (Optional : 10000 psi)	6000 psi (Optional : 10000 psi)	3000 PSI Standard (Optional 6000 PSI with square body)
Size	1/4" to 3/4"	1/8" to 1"	1/8" to 1"	1/4" to 3/4"
Wetted parts	AISI 316 SS, AISI 316L SS, Duplex, Super Duplex, Inconel 625, Hastelloy, Monel	AISI 316 SS, AISI 316L SS, Duplex, Super Duplex, Inconel 625, Hastelloy, Monel	AISI 316 SS, AISI 316L SS, Duplex, Super Duplex, Inconel 625, Hastelloy, Monel	AISI 316 SS, AISI 316L SS, Duplex, Super Duplex, Inconel 625, Hastelloy, Monel
Working temperature	Up to 240°C (PTFE Packing) Up to 550°C (Graphite Packing)	Up to 240°C (PTFE Packing) Up to 550°C (Graphite Packing)	Up to 240°C (PTFE Packing) Up to 550°C (Graphite Packing)	Up to 240°C (PTFE Packing) Up to 550°C (Graphite Packing)
Operation option	With Anti-Temper Key	With Anti-Temper Key	With Anti-Temper Key	Stainless Steel Handle
Standard Tests	Visual & Dimensional Check Hydropneumatic Test	Visual & Dimensional Check Hydropneumatic Test	Visual & Dimensional Check Hydropneumatic Test	Visual & Dimensional Check Hydropneumatic Test
Option Tests	PMI TEST NACE MR 0175 / ISO 15156 IGC TEST	PMI TEST NACE MR 0175 / ISO 15156 IGC TEST	PMI TEST NACE MR 0175 / ISO 15156 IGC TEST	PMI TEST NACE MR 0175 / ISO 15156 IGC TEST
Connection	Threaded/SW	Threaded/SW	Threaded/SW	Threaded

# Instrumentation Valves and Manifolds

## Manifold Valves

- Monoflange Single Block and Bleed Valve
- Two Valve Manifolds
- Three Valve Manifolds
- Five Valve Manifolds



Model	MF29G	2VT	3VQ	5VR
Type	Monoflange	2 valve	3 valve	5 valve
Mounting	Direct Flange Mounting	Remote mount (Pipe to Pipe)	Direct mount (Pipe to Flange)	Remote mount (Pipe to Pipe)
Pressure rating	6000 psi (Optional 10000 psi)	6000 psi (Optional 10000 psi)	6000 psi (Optional 10000 psi)	6000 psi (Optional 10000 psi)
Size	1/2" to 2"	1/4" to 3/4"	1/2"	1/4" to 1/2"
Wetted parts	AISI 316 SS, AISI 316L SS, Duplex, Super Duplex, Inconel 625, Hastelloy, Monel	AISI 316 SS, AISI 316L SS, Duplex, Super Duplex, Inconel 625, Hastelloy, Monel	AISI 316 SS, AISI 316L SS, Duplex, Super Duplex, Inconel 625, Hastelloy, Monel	AISI 316 SS, AISI 316L SS, Duplex, Super Duplex, Inconel 625, Hastelloy, Monel
Working temperature	Up to 240°C (PTFE Packing) Up to 550°C (Graphite Packing)	Up to 240°C (PTFE Packing) Up to 550°C (Graphite Packing)	Up to 240°C (PTFE Packing) Up to 550°C (Graphite Packing)	Up to 240°C (PTFE Packing) Up to 550°C (Graphite Packing)
Operation option	With Anti-Temper Key	With Anti-Temper Key	With Anti-Temper Key	With Anti-Temper Key
Standard Tests	Visual & Dimensional Check Hydropneumatic Test	Visual & Dimensional Check Hydropneumatic Test	Visual & Dimensional Check Hydropneumatic Test	Visual & Dimensional Check Hydropneumatic Test
Option Tests	PMI TEST NACE MR 0175 / ISO 15156 IGC TEST	PMI TEST NACE MR 0175 / ISO 15156 IGC TEST	PMI TEST NACE MR 0175 / ISO 15J 56 IGC TEST	PMI TEST NACE MR 0175 / ISO 15156 IGC TEST
Connection	Flanged	Threaded	Flanged	Threaded

# Temperature Measurement

## Temperature Gauges and Switch



- Gas Filled type Gauge
- Bimetallic type Gauge
- Temperature Switch



Model	CA	CB
Type	Gas Filled	Bimetal
Nominal size	100, 125, 150, 200, 250mm	40, 50, 63, 80, 100, 125, 150 mm
Temperature range	-80 to 600°C	-80 to 500°C
Accuracy class	1.0	1.0
Case material	AISI 304 SS (Optional AISI 316 SS)	AISI 304 SS (Optional AISI 316 SS)
Stem length	Starting from 110 mm	30 to 600 mm
Sensing element material	AISI 316 SS	AISI 316 SS
Process connection	3/8", 1/2" BSP / NPT,	3/8", 1/2" BSP / NPT,
Mountings *	1, 2, 3, 5, 8 & 9	2, 4, 8 & 14
Protection class	IP 65 (Optional : IP 66, IP 67)	IP 65 (Optional : IP 66, IP 67)
Reference standard	EN 13190	EN 13190
Capillary	1 to 15 meters	NA

Model	ZTD
Type	Rigid stem / capillary
Temperature range	10 to 400°C
Repeatability class	1.0
Switch rating	15 A, 250 VAC, 0.2 A, 220 VDC
Stem length	110 to 600 mm
Sensing element material	AISI 316 SS
Process connection	3/8", 1/2" BSP / NPT,
Housing / body material	Die Cast Aluminum
Protection class	IP 66
Capillary	up to 5 meters

### Mountings

- |  |                                      |                           |
|--|--------------------------------------|---------------------------|
| 1 Wall / surface / projection mounting with bottom entry | 2 Direct bottom entry                | 3 Direct lower back entry |
| 4 Direct center back entry                               | 5 Lower back entry with front flange | 8 Every angle back entry  |
| 9 Lower back entry with mounting bracket                 | 14. Bottom entry through elbow       |                           |



# Temperature Measurement

## RTDs

- Screwed / Flanged connections
- NUN connections
- Climp on Pot seal / Threaded Pot
- Multi Point RTD Assembly



Model	R01	R02	R11	R05
Operating temperature	-200 to 600°C	-200 to 600°C	-70 to 500°C	-200 to 600°C
Element type	Simplex, Duplex	Simplex, Duplex	Simplex, Duplex	Simplex, Duplex (Multipoint)
Sheath material	AISI 316 SS	AISI 316 SS	AISI 316 SS	AISI 316 SS
Sheath diameter	3, 4.5, 6, 8, 10 & 12 mm	3, 4.5, 6, 8, 10 & 12 mm	3, 4.5, 6 & 8 mm	3 & 6 mm
Elements	Pt100, Pt500 & Pt1000	Pt100, Pt500 & Pt1000	Pt100, Pt500 & Pt1000	Pt100
Enclosure (housing) material	Die Cast Aluminum, AISI 304 SS, AISI 316 SS	Die Cast Aluminum, AISI 304 SS, AISI 316 SS		Die Cast Aluminum, AISI 304 SS, AISI 316 SS
Protection class & type	IP 65, IP 67, IP 68, Flame proof II A II B, Explosion Proof II C	IP 65, IP 67, IP 68, Flame proof II A II B, Explosion Proof II C, ATEX Approved		IP 65, IP 67, IP 68, Flame proof II A II B, Explosion Proof II C
Cable gland	Single compression / Double compression	Single compression / Double compression / ATEX IIC certified		Single compression / Double compression
Process connections	1/4" to 3/4" BSP / NPT(M) & Adjustable Flange	1/4" to 3/4" BSP / NPT(M) & Nipple Union Nipple	1/2" BSP (M) Adj	Nipple & Union, Flexible Hose
Cable gland material	Nikel plated brass, AISI 304 SS, AISI 316 SS	Nikel plated brass, AISI 304 SS, AISI 316 SS		Nikel plated brass, AISI 304 SS, AISI 316 SS
Reference standard	IEC 751 / DIN 43760	IEC 751 / DIN 43760	IEC 751 / DIN 43760	IEC 751 / DIN 43760
Certification		ATEX / IEC Ex Exd & Exe Certified with optional flange		

# Temperature Measurement

## Thermocouples



- Fixed / Adjustable and NUN connection
- Single / Double Protecting Tube
- Crimp on Pot Seal / Threaded Pot
- Plug and Jack connector



Model	T01	T02	T09	T10
Elements	J, K, T, E, R, S, B, N	K, R, S, B	K, J, E, N, T	K, J, E, N, T
Element type	Simplex, Duplex	Simplex, Duplex	Simplex, Duplex	Simplex, Duplex
Sheath material	AISI 316 SS, AISI 310 SS, Inconel 600	AISI 316 SS, AISI 310 SS, Inconel 600	AISI SS 316, AISI 310 SS, Inconel 600	AISI 316 SS, AISI 310 SS, Inconel 600
Sheath diameter	1, 1.5, 3, 4.5, 6, 8, 10, 12 mm	1, 1.5, 3, 4.5, 6, 8, 10, 12 mm	1, 1.5, 2, 3, 4.5, 6, 8 mm	1, 1.5, 3, 4.5, 6 & 8 mm
Enclosure (housing) material	Die Cast Aluminum, AISI 304 SS, AISI 316 SS	Die Cast Aluminum, AISI 304 SS, AISI 316 SS	PTFE/SS wire braided lead wires	Plug & Jack Connector
Protection class & type	IP 65, IP 67, IP 68, Flame proof II A II B, Explosion Proof II C	IP 65, IP 67, IP 68, Flame proof II A II B, Explosion Proof II C		Standard, High Temperature
Cable gland	Single compression / Double compression	Single compression / Double compression		
Cable gland material	Nickel plated Brass, AISI 304 SS, AISI 316 SS	Nickel plated Brass, AISI 304 SS, AISI 316 SS		
Process connections	1/4" to 3/4" BSP / NPT(M) & Nipple Union Nipple	1/4" to 3/4" BSP / NPT(M) & Adjustable Flange	1/2" to 3/4" BSP / NPT(M/F)	1/4" to 3/4" BSP / NPT(M)
Protecting tube		KER 710, KER 610		
Reference standard	IEC 584.2/ ANSI MC 96.1	IEC 584.2/ ANSI MC 96.1	IEC 584.2/ ANSI MC 96.1	IEC 584.2/ ANSI MC 96.1
Certification	ATEX / IEC Ex Exd & Exe Certified only with NUN			

# Temperature Measurement

## Thermowells

- Bar Stock screwed type
- Bar Stock flanged type
- Bar Stock Vanstone type
- Built in from Pipe and Bar Stock type



Model	W1	W2	W6	W8
Type	Bar Stock (Screwed) Straight, Reduced Tip, Partial Taper, Full Taper	Bar Stock (Flanged) Straight, Reduced Tip, Partial Taper, Full Taper	Vanstone type	Fabricated from pipe
Material	AISI 304 SS, AISI 316 SS, Hastelloy C, Monel, Inconel and many more	AISI 304 SS, AISI 316 SS, Hastelloy C, Monel, Inconel and many more	AISI 304 SS, AISI 316 SS, Hastelloy C, Monel, Inconel and many more	AISI 304 SS, AISI 316 SS, Hastelloy C, Monel, Inconel and many more
Instrument connection	3/8" to 1" BSP/NPT others on request	3/8" to 1" BSP/NPT others on request	1/2" NPT	1/2" NPT
Process connection	3/8" to 1" BSP/NPT	1/2" to 3" Flanged	1/2" to 3" Flanged	1/2" to 3" Flanged
Approval	IBR	IBR		
Additional data	Wake Frequency Calculations as per PTC 19.3	Wake Frequency Calculations as per PTC 19.3	Wake Frequency Calculations as per PTC 19.3	

**Note:**

1. We offer MOCs for different applications. In case of requirement of MOC other than mentioned in catalogue; please contact our nearest sales office.
2. We carry out Test & Calibration as per International Standards.  
We also offer following customized testing requirements like Dye Penetration, Hydrostatic, Positive Material Identification, NACE Certification, Vibration Analysis for Non-Siesmic & Siesmic.  
For any specific requirement to meet your project needs, contact us.

# Level Instruments

Level Switch for detection / control of liquid



- Side mounted switch
- Miniature - side / Top mounted
- Magnetic type
- Miniature - Polypropylene type



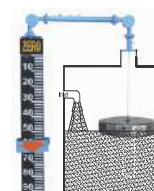
Model	LA - Level Switch Side Mounted	LB - Miniature Level Switch Side / Top Mounted (all SS)	LC - Magnetic Float Level Switch Top Mounted	LJ - Miniature Level Switch Side / top Mounted
Material of construction	AISI 316 SS	AISI 316 SS	AISI 316 SS	Polypropylene
Insertion length / range	220 mm Side Mount	100 mm	100 mm to 2500 mm	100 mm
Operating temperature	-10°C to 150°C	100°C	100°C	-20°C to 80°C
Operating pressure	18 bar	10 bar	10 bar	4 bar
Electrical contact rating	5A / 230VAC	0.5 A / 230VAC	0.5A/230VAC	0.5 A / 230VAC
Other MOC	PTFE Coated			
Approvals	IP 65 / Ex Proof for Gr. II A & II B or Gr. II C		IP 65 / Ex proof for Gr. II A & II B or Gr. II C	
Options	1) Adjustable differential 2) High - temperature construction	Din connector	Din connector	

# Level Instruments

Level Switch for detection / control of liquid



- Bypass Level indicator
- Glass type - Reflex / Transparent
- Tubular type
- Float and Board type



Model	LD - Bypass Level Indicator Side / Top Mounted	LE - Reflex / Transparent Level Gauge	LG - Tubular Level Gauge	LH - Float & Board Level Gauge
Material of construction	AISI 304 SS, AISI 316 SS	ASTM A105, AISI 304 SS, AISI 316 SS	ASTM A105, AISI 304 SS, AISI 316 SS	AISI 304 SS, AISI 316 SS
C-C Distance / Range	300 mm to 6000 mm	350 mm to 2500 mm	350 mm to 2200 mm	1000 mm to 20000 mm
Operating temperature	300°C	400°C	100°C	100°C
Operating pressure	80 bar	150 bar	10 bar	5 Atm
Level Indication	Bicolor Rotating Flappers	Toughened Glass	Borosilicate Glass	N/A
Other MOC	Polypropylene, Inconel 62S	Duplex SS	Polypropylene	Polypropylene
Approvals	IP 65	IBR		
Others	1. Switch 2. Transmitter	1. Illuminator 2. Antifrost		

# Level Instruments

## Level & Accessories



- Cable float type
- Reed Switch level transmitter
- External Chambers



Model	LK - Top Mounted Cable Float Level Switch	LR- Reed Chain Level Transmitter	LY - External Chambers	LZ - Cable Float Level Switch
Material of construction	Polypropylène	SS 316	CS, AISI 304 SS, AISI 316 SS	Polypropylene
C— C Distance / Range	1000 mm to 10000 mm	200 mm to 2000 mm	200 mm to 3000 mm	up to 35 Mtrs
Operating temperature	60°C	100°C		60° C
Operating pressure	4 bar	10 bar		4 bar
Switch rating	16A/ 250 VAC			16A/ 250 VAC
Approvals	IP67	IP66		IP 68
Features	Rugged Construction Economical Easy Installation	4 to 20mA output Easy Installation	Hydro tested up to 150 % To be used as enclosures for different types of level switches / Instruments	Hermetically sealed/molded Adjustable counter weight Micro switch operated Non Toxic Easy Installation

# Industries we cater to



Cement



Chemical & Fertilizer



Energy



Fire Fighting



Food & Beverage



Glass



HVAC



Irrigation



Non Ferrous



Oil & Gas



Petrochemical & Refinery



Pharmaceutical



Power



Pumps & Compressors



Shipping & Logistics



Steel



Sugar



Textile



Automobile & Transportation



Water Treatment & Storage



Alarm for Hydro Pneumatic Tank



Machines & Lab Equipment



Mines



Temperature & Pressure Controlled Vehicle



Paper & Pulp



Sanitary



Paint



Industrial Tank  
& many more.....

# Contact

## Head Office

### MUMBAI

BAUMER TECHNOLOGIES INDIA PVT. LTD.  
Kanakia Wall Street, 'B Wing', 401 & 402,  
Andheri Kurla Road, Chakala, Andheri (East),  
Mumbai - 400093  
Phone : +91-22-4887-4000  
Email : info.in@baumer.com  
Website : www.baumer.com

## Production Facility

### VAPI

BAUMER TECHNOLOGIES INDIA PVT. LTD.  
Plot No. 34, G.I.D.C., Phase 1  
Vapi - 396195  
Phone : +91-260-2410123

## Sales Offices

### DELHI

Office No- B-2, Lower Ground,  
Commercial Plot No. - 5, Sec-14,  
Near Yashoda Hospital, Kaushambi,  
Ghaziabad, U.P. - 201010. India.  
Phone : +91-120-4171886

### PUNE

Bellevue Building, Plot No. 46 and 47,  
Survey No 23/6 A/2  
Balewadi, Pune - 411045  
Phone : 91-020-67-105500

### VADODARA

605, Sanket Height,  
Nr. Kalali Flyover, Sun Pharma Road  
Vadodara - 390020  
Gujarat, India  
Mobile : +91 9879385979

### DUBAI

Dubai Investments Park 2 Community  
597, Street 79 DIRC  
Warehouse Complex  
Office #G-12 to G 14P.O.  
Box 487770, Dubai, UAE

### REGIONAL PRESENCE

- Bengaluru
- Chennai
- Kolkata
- Hyderabad

