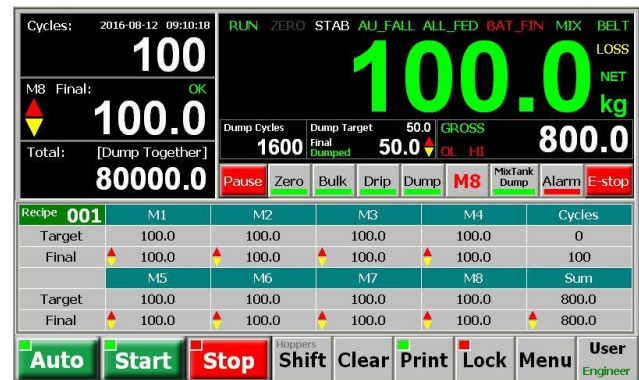
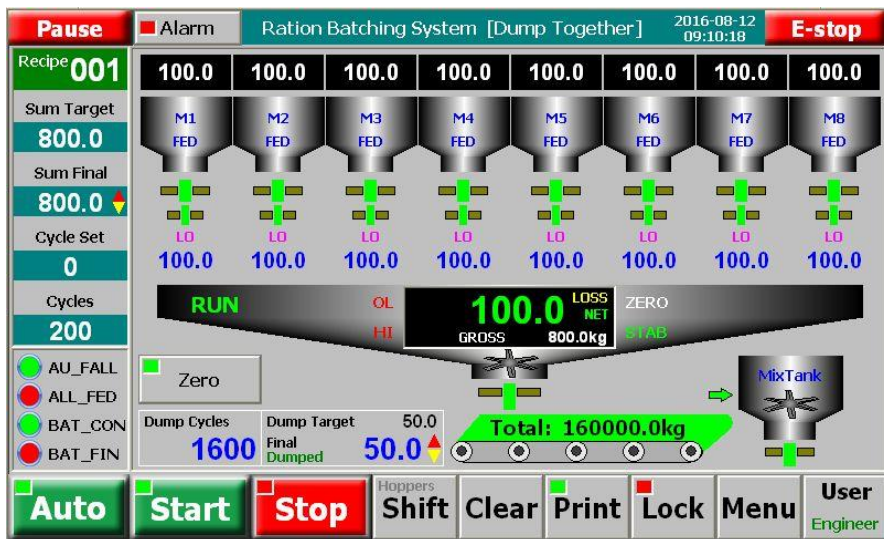




BATCHING CONTROLLER

M10 [EB]

- ✧ Suitable for Batching Scale with 14-Material & 2-Speed Feeding or 16-Material&1-Speed Feeding [Single-scale]. Optional Dumping Modes: Dump Separately, Dump Together and Ration Dumping [Loss-in-weight].
- ✧ 7"/10.2" Ultralight and ultrathin TFT touch screen with embedded weighing/control module.
- ✧ Loadcell Interface
 - Max. Connection Quantity: 16 Loadcells (350Ω).
 - 24-bit High-precision and high-speed $\Sigma-\Delta$ /A/D conversion module with 1/1,000,000 internal resolution and sampling frequency 800Hz.
 - Special anti-vibration digital filtering algorithm for ensuring the weighing stability and accuracy when there is strong vibration on the load receptor, and the rapid response capability when the weight signal changes.
- ✧ I/O Interface
 - 9 Definable normally open switch inputs [DI] and 18 definable normally open transistor switch outputs [DO].
 - 2 Optional & definable analog signal AO[0~10V] for weight signal output or 'Bulk/Dribble Feed' control.
- ✧ Digital Communication Interface
 - COM1[RS232] & COM2[RS485] for connecting Host IPC/PLC and LED Remote Display.
 - COM[RS232] for connecting RS232 Serial Printer.
 - USB1 for connecting USB mouse, downloading HMI software from U-disk and copying data to U-disk.
 - LAN: Optional Ethernet port.
 - 100 Recipes for batching control.
 - Optional 'Auto Correct Inflight' function.
 - 'Batch Target Control' function [With Batch Count Target finished, the batching process will stop automatically].
 - The Batch Records can be printed automatically.
 - Historical Batch Records, Totalizing Reports and Recipes can be queried and printed.



ADDRESS

758-B, 65th Street,
10th Sector, K.K. Nagar,
Chennai - 600078.
Ph: 044-2366 0384 / 94440 27384
E-mail : akargravity@yahoo.co.in
Web : www.akarcontrols.in

