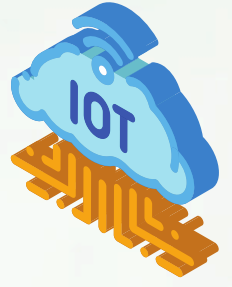




YuDash[®]



Data Loggers & IoT Gateways for Environment Monitoring



Water Quality



Ground Water



Water Treatment



Water Consumption



Water Tank Level



Air Emission



Air Quality



Weather Stations



Solar Plant



Network Connectivity



4G Cellular



Ethernet



WiFi



Lorawan



Product Variants



EU, MENA



ANZ, LATAM



USA, Global



India, ASEAN

Cloud Protocols



MQTT



REST



HTTP



FTP



TLS/SSL

Payload Formats



JSON



TXT



CSV

Industrial Protocols



Modbus/RS485



4-20mA



0-100mV



0-5V



HTML TCP/IP



Modbus/TCP



UART/RS232



SDI12



Digital Sensors

Qualified on all Environmental Instruments



Water Analysers



Emission Analysers



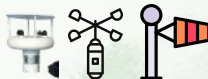
Pyranometer



Stack Monitors



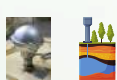
Dust | PM 2.5 Monitors



Wind Speed / Direction



Water Flow Meters



Level Sensors



Air Quality

Product Features



On-device display for status & diagnostics



Inbuilt JSON payload formats library



Simultaneous data push to multiple servers



Data scaling & Post processing



Generic TXT/CSV payload generator & SD storage



WiFi/LAN based easy configuration



Tick, Select & Configure JSON backup and restore



YuReCon: MQTT based Remote Configuration



On-device web server for local monitoring



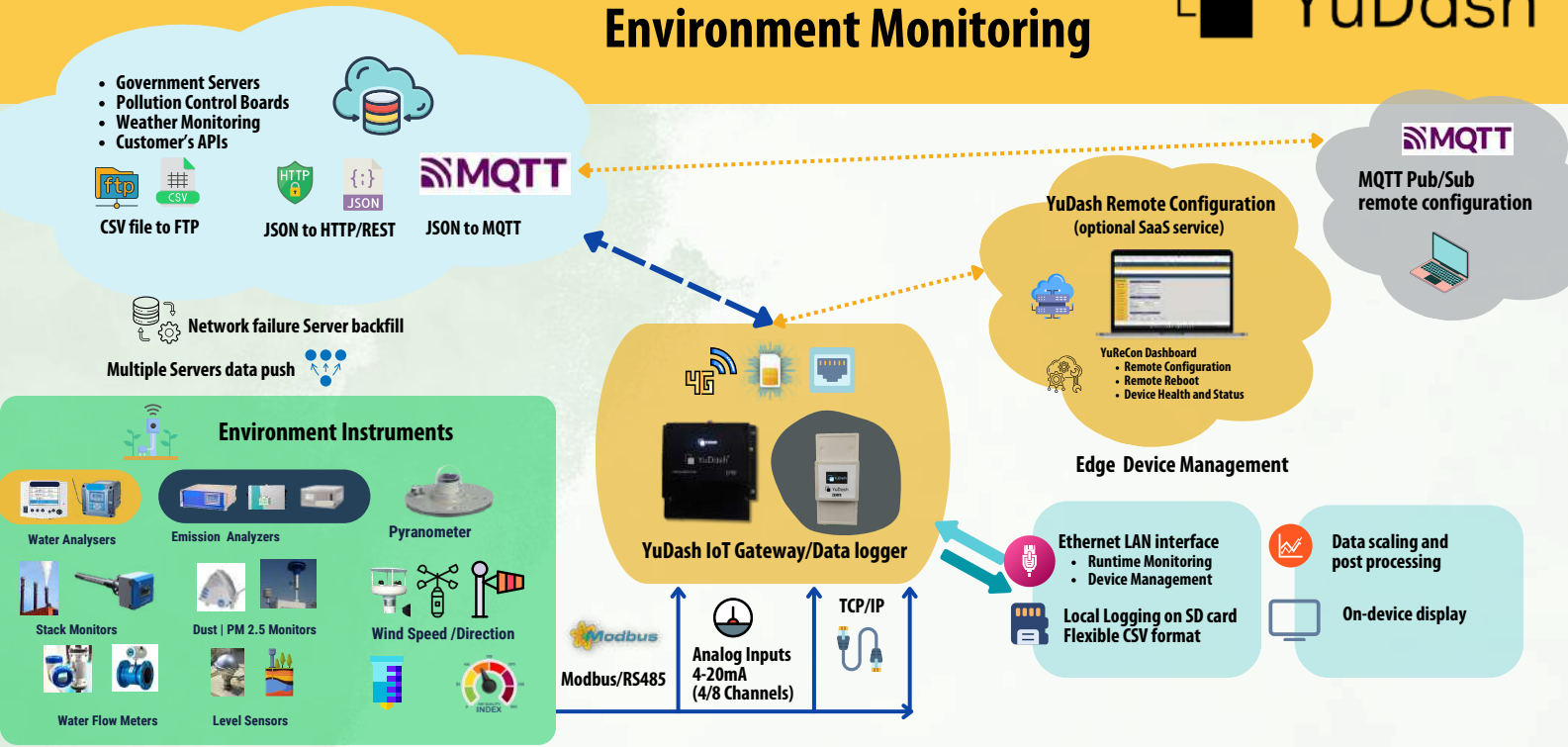
Network failure support Local Storage & Back-fill



Product documentation
<https://docs.yudash.com>

YuDash[®]
IoT | Industry 4.0

YuDash IoT Architecture for Environment Monitoring



Water Analyzer Controllers (TCP/IP HTML parser)



Flow meters (Modbus RS485)



Ultrasonic Level sensors (4-20mA/Modbus with data scaling)



Air/Water/Gas Analyzers Agriculture Instruments



PLC based STP/WTP control panels (Modbus TCP/IP / RS485 / RS232)



Worldwide YuDash deployments..



www.yudash.com

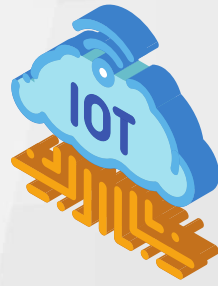
YuDash
 IoT | Industry 4.0

sales@yudash.com
 +91 9871900565
 +91 9310404923

YuDash Systems Pvt. Ltd.
 D-39, Meerut Road Indl. Area III,
 Ghaziabad (Delhi NCR), UP 201003
 India

YuDash[®]

LYNX IoT Gateway



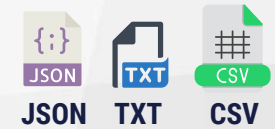
Compatible with all IoT and compliance platforms



Cloud Protocols



Payload Formats



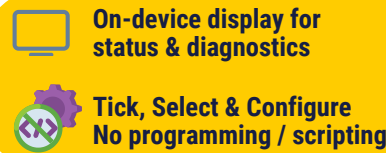
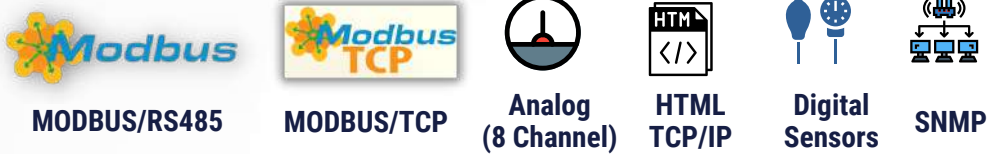
Network Connectivity



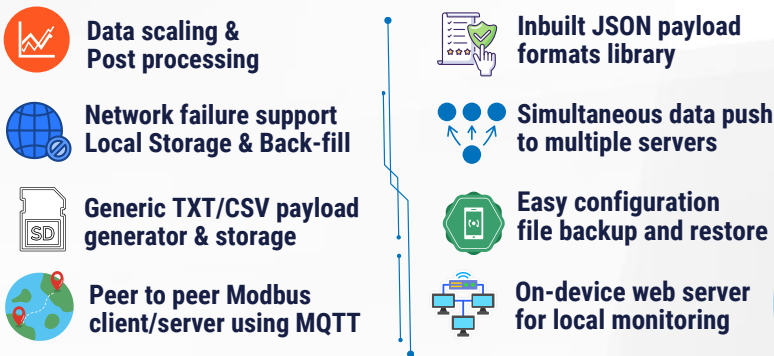
4G Product variants



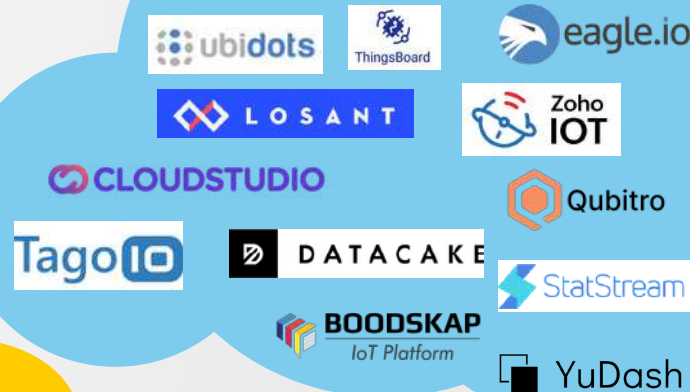
Industrial Protocols



IoT Gateway and Datalogger Features



Pre-integrated with Global IoT Platforms..



Multiple deployments across verticals



Technical Specifications

Rated Input Supply	12V / 24V DC input.
Mounting	DIN Rail mounting and Wall mounting.
Dimensions	94 x 90 x 35mm
Enclosure	ABS Plastic Enclosure. IP 30 rating.
Display	OLED screen for status monitor and configuration
Environmental Conditions	Within IP67 enclosure for outdoor or indoor use.
Temperature	Operating : 0 °C to 60°C Storage: -10 °C to 70°C
Humidity	Upto 85% (non-condensing)
Weight	210 gram (approx)

LYNX Part Numbers

Part No	WiFi	4G/LTE	Ethernet	RS-485	RTC & SD card	Analog (0-20mA)
IoT Gateways						
LYNX41	✓		✓	✓	✓	
LYNX42	✓	✓	✓	✓	✓	
Data Loggers						
LYNX48	✓	✓	✓	✓	✓	✓
LYNX49	✓		✓	✓	✓	✓

- 1) 4G/LTE EU part numbers: LYNX42E, LYNX48E
2) 4G/LTE Global part numbers: LYNX42G, LYNX48G



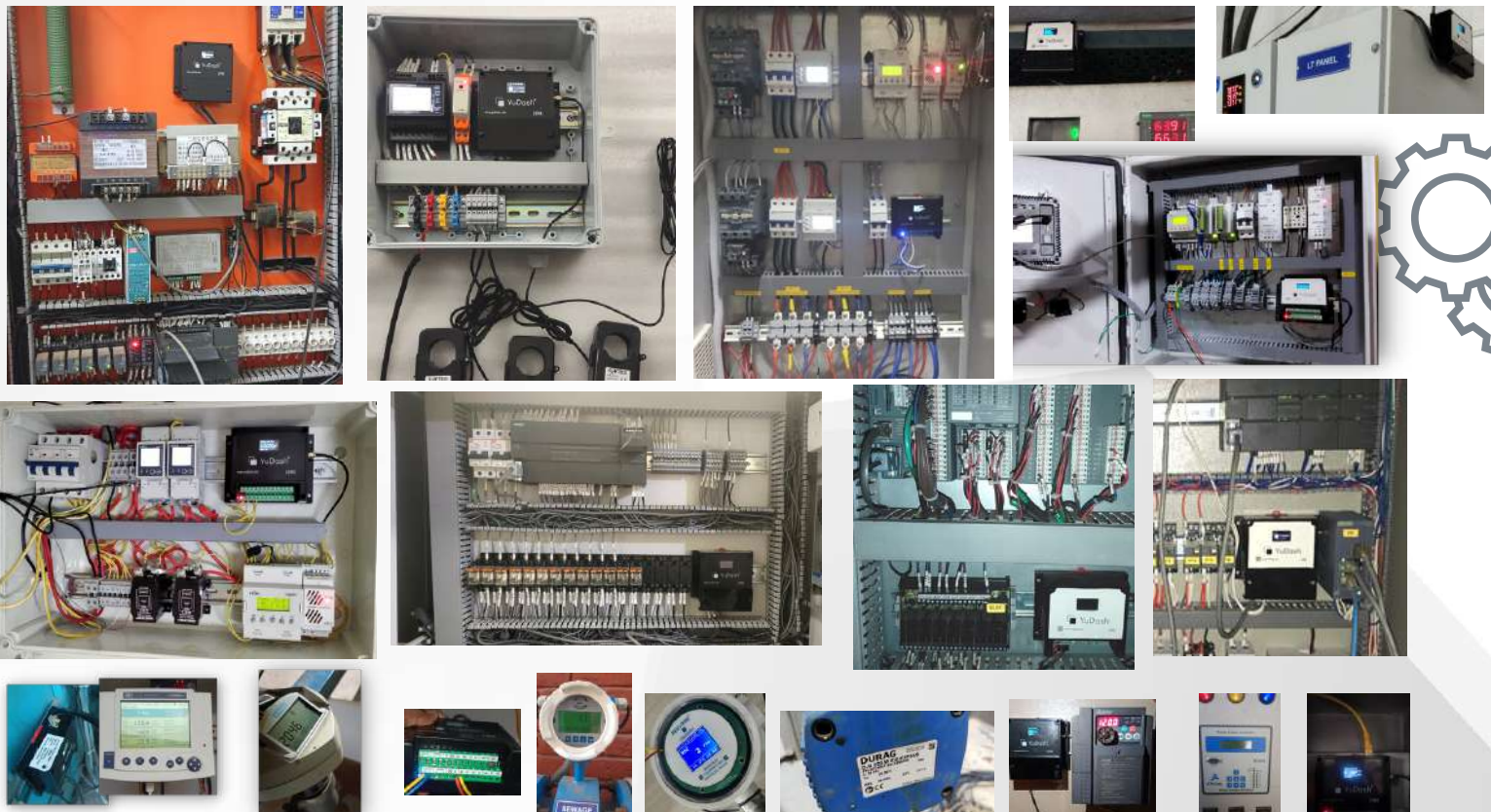
Product documentation
<https://docs.yudash.com>

Technical Features

Network Connectivity	1) WiFi, Ethernet, 4G Cellular (LTE). 2) India, EU and Global variants for 4G/LTE 3) Network fallback options. 4) Local storage (SD card) and server backfill for network failure 5) Real Time Clock (RTC). Auto-synchronization with NTP
MODBUS Communication	1) RS-485 MODBUS/RTU and MODBUS TCP/IP 2) Upto 96 parameters/tags. Support for 16 Modbus slaves 3) Modbus Write feature for PLC/Instrument settings update 4) MQTT/Analog to Modbus Server (RTU and TCP/IP)
Cloud Protocols and Payloads	1) Supports MQTT, REST, HTTP, FTP. Secure layer (SSL/TLS) support. 2) Inbuilt JSON payload formats to support all IoT servers. 3) Generic payload generator for text/csv formats. 4) Data push to multiple servers across protocols.
Ethernet Features	1) Connect to Internet / local LAN server 2) Modbus TCP/IP, HTML parsing, SNMP 3) Configurable for Static or Dynamic IP. 4) On-device Web server for real-time monitoring and diagnostics.
Analog Inputs	1) 8 channel Analog Inputs (0-20mA / 4-20mA) 2) Data scaling, clipping for parameter mapping.
Flexible Configuration	1) Easy configuration UI through WiFi/LAN from laptop/mobile. 2) JSON based configuration for backup/restore and mass deployment. 3) Configure deployed LYNX in field through YuDash cloud or MQTT.
Additional Interfaces	1) Inbuilt support for various I2C and One wire sensors Temperature, Humidity, Pressure, Distance, Lux 2) Optional interfaces: Dual Channel RS-485, RS232



Product documentation
<https://docs.yudash.com>



YuDash

IoT | Industry 4.0

www.yudash.com

sales@yudash.com

+91 9871900565

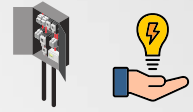
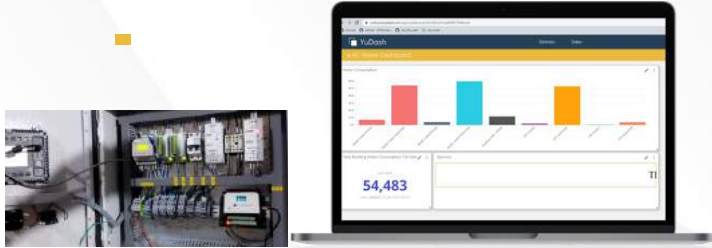
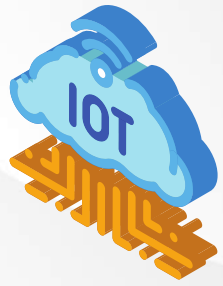
+91 9310404923

YuDash Systems Pvt. Ltd.
D-39, Meerut Road Indl. Area III,
Ghaziabad (Delhi NCR), UP 201003
India

#startupindia

DPIIT recognized
startup (DIPP87505)

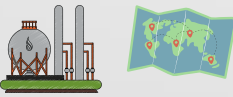
YuDash[®] Industrial IoT Solutions



Energy Management
Billing | Audit | Optimization



Smart Building
ESG Compliance

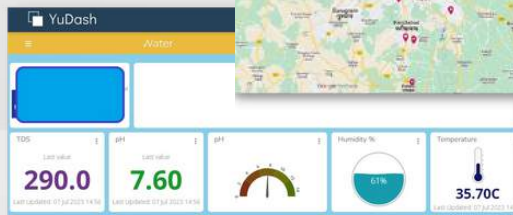


Remote Asset Management



Plant Process Monitoring

Branch Management

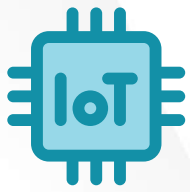


Smart Factory

Ongoing IIoT partnerships with

- System Integrators
- Automation Companies
- Industry 4.0 Companies
- Energy Professionals
- CEMS Companies

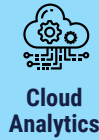




Industrial IoT Stack



YuDash IoT Platform



Drag & Drop



Mobile & Web



Email/Phone Alerts



2-Year Storage

Cloud Protocols



MQTT



REST



HTTP



FTP



SSL



JSON



TXT



CSV

Payload Formats

Network Connectivity



4G Cellular



Ethernet



WiFi



LoRaWAN

IoT Gateways



LYNX IoT Gateway



ZENYX IoT Gateway

Industrial Protocols



MODBUS/RS485



MODBUS/TCP



Analog Inputs



HTML TCP/IP



Digital Sensors



SNMP

Industrial Instruments & Equipment



Energy Meter



PLC



HMI



Water Analysers



Emission Analysers



Stack Monitors



Process Meters



Temperature Sensors



UPS



Dust | PM 2.5 Monitors



Level Sensors



Water Flow Meters

YuDash IIoT solution includes..

It excludes..



Requirement Understanding



IoT Architecture & System Design



Instrument Selection Guidance



PLC/HMI Integration Support



Pre-activated IoT SIM cards



YuDash IoT Gateways



YuDash Cloud with Annual Charges



Basic Dashboard Design



IIoT Dashboard Training



Cost Effective IoT Solution



PLC programming



Instrument Configuration



Panel Wiring



Site Installation



IoT | Industry 4.0

www.yudash.com



DPIIT recognized startup (DIPP87505)

sales@yudash.com
+91 9310404923
+91 9871900565

YuDash Systems Pvt. Ltd.
D-39, Meerut Road Indl. Area III,
Ghaziabad (Delhi NCR), UP 201003
India