



ROBOTRONIX
AUTOMATION SOLUTION

COMPANY PROFILE

ABOUT US:-

Robotronix Automation Solution we conceptualized with the vision to utilize the progression of factory automation into streamlining the operational processes. This has become the need of the hour to restructure the mechanism and enhance the workforce's safety. The functionalities in any industrial complex require a seamless flow of distinctive tasks. Our company develops innovative and state-of-the-art solutions that would simplify and enhance the manufacturing segment's efficiency

Our primary goal in all business decisions is to achieve a high level of quality & improvise the production in the Manufacturing, FMCG, Pharmaceutical, Packaging industries to enhance the automation & reduce the workforce on fatigue & safety areas.

This is not alone to improve the productivity but also Repeatability, Accuracy, & production. This simple yet effective approach has fuelled our growth and will continue to do so for years down the road.

Check our site www.therobotronix.com to discover what we're all about.

About Us

Welcome to the latest venture of Robotronix.

MISSION & VISION:-

Mission:-

Our mission is to provide businesses of all sizes with easily deployable and scalable automation solutions that enable them to optimize their operations and increase productivity. We strive to simplify complex processes through the intelligent use of technology and offer personalized solutions that meet the unique needs and requirements of each client

Vision:-

Our vision is to empower businesses with innovative automation solutions that streamline their processes, boost efficiency, and drive growth. Our aim is to become a global leader in automation technology & Vision system by delivering cutting-edge solutions that address the needs and challenges of modern business environments.



RE VALUES

Customer Focus



*Integrity &
Transparency*

Agility



*Innovation &
Collaboration*



The background of the slide is a photograph of several industrial robotic arms in a factory setting. The arms are white and grey, with some orange accents. They are positioned on a dark, textured metal surface that recedes into the distance. The lighting is bright, creating a clean and professional atmosphere.

OUR COMPANY

Robotronix Automation Solution We are a team of passionate engineers who design, craft and customize industrial problems and give them solution to help industries to push their organization to the next level. Our primary goal is to achieve a high level of integration between humans and robots ensuring maximum safety to humans and completing the task optimally.

COMPANY OUTLOOK

5

Years old

19-22

Total Employees

65+

Projects

58+

Happy clients

5.2Cr

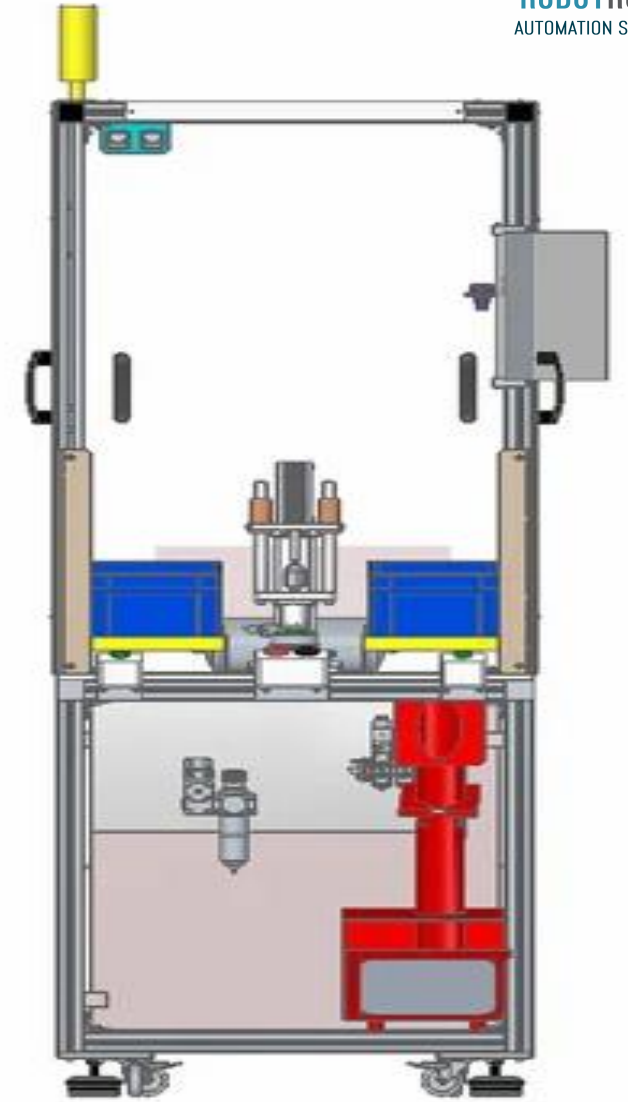
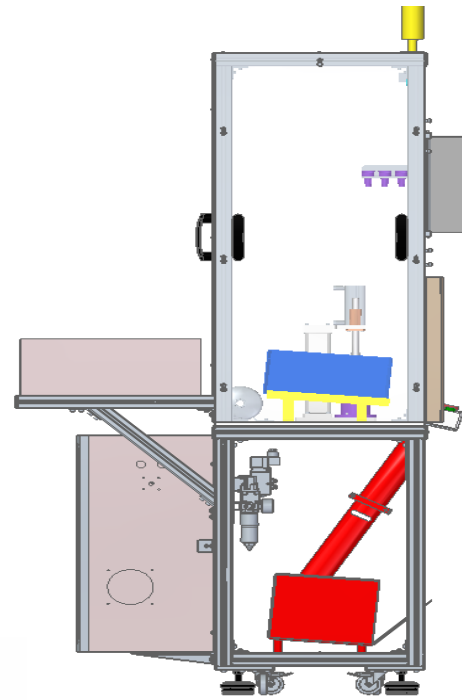
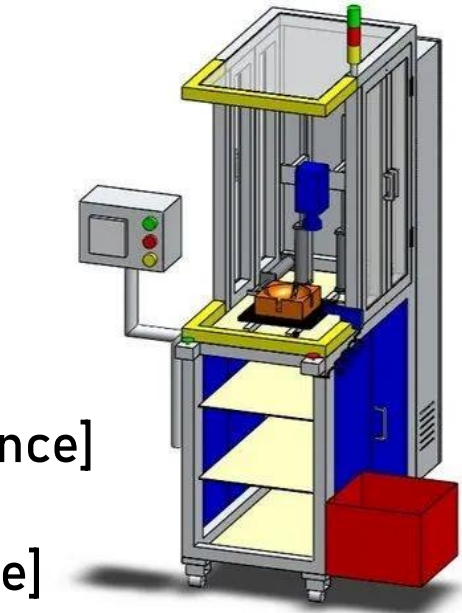
Turnover 2023

SUCCESS

DESIGNER TEAM: -

1. Sr. Mechanical Designer - 2 [5-8 Years Experience]
2. Jr. Mechanical Designer- 2 [1-3 Years Experience]
3. Sr. Electrical Designer- 1 [3 Years Experience]
4. Concept 2d Sketching- 1 [3 Years Experience]
5. Assembly Operations & - 1 Member
Machine Operators

Licensed Softwares: -



ELECTRICAL TEAM: -

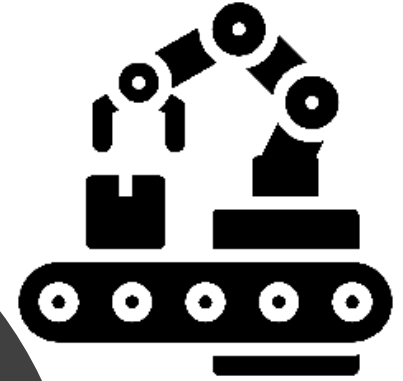
1. Sr. PLC Programmers – 2 [4 Years Experience]
2. Electrical Wiring- 2 [1-3 Years Experience]
3. Vision Engineers- 4 [2-6 Years Experience]
4. Robot Programming- 2 [3 Years Experience]



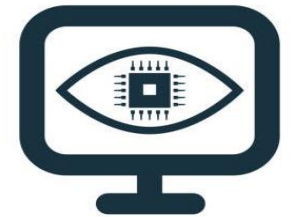
Licensed Softwares: -

SOLUTIONS WE OFFER

- ✓ Robot Integration
- ✓ 3D Designing & Simulation
- ✓ Machine Vision Solution
- ✓ Specialized Visual Process Analytics and IIoT solutions



INDUSTRY 4.0



COMPUTER VISION

OUR SOLUTIONS

We don't sell products; we utilize the products to make automation solution

Automation Solutions

- ✓ Integration of major Industrial Robots
- ✓ Collaborative Robots
- ✓ Pneumatic Robots
- ✓ PLC Programming
- ✓ Servo Tuning & Actuation
- ✓ Customized Gauging Measurement
- ✓ Industry 4.0 communication support
- ✓ OEM AGV setup & Development
- ✓ Integration with AGV& Robot

Vision & Safety Integration

- ✓ 2d& OCR Code Reading
- ✓ Automotive& Packaging
- ✓ Electronics Industry
- ✓ FMCG
- ✓ Pharmaceutical

IT Support

- ✓ Traceability/ IIOT
- ✓ Computer Vision AI/ML
- ✓ Video Analytics 4.0

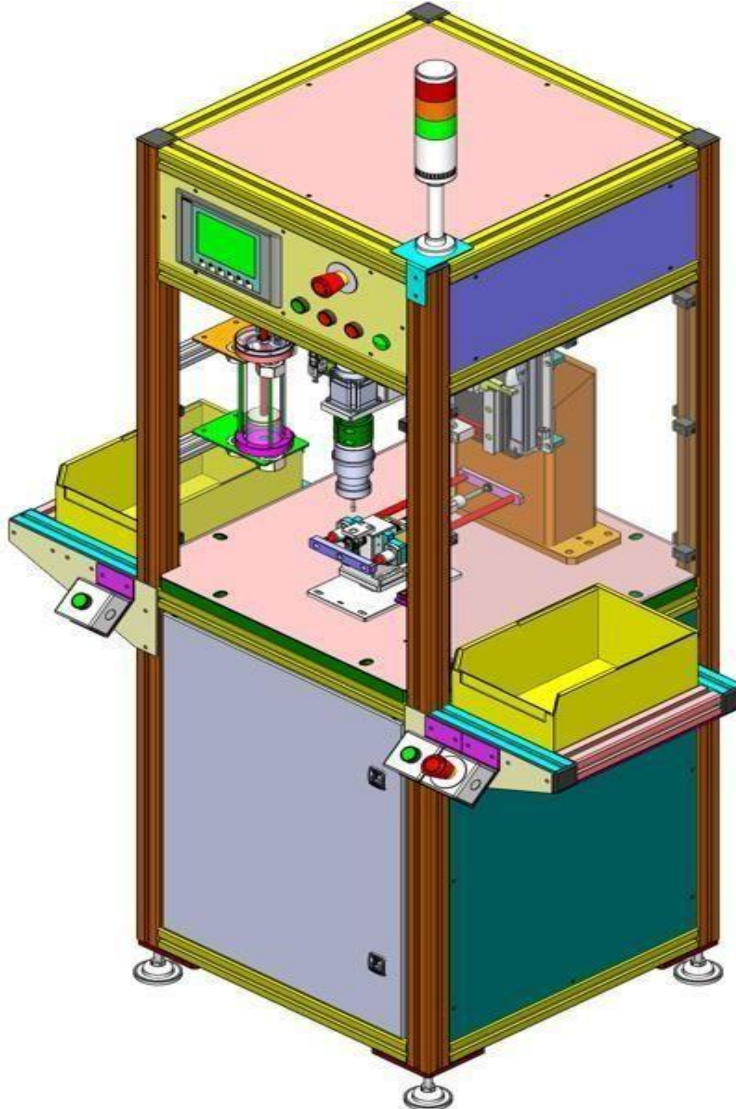
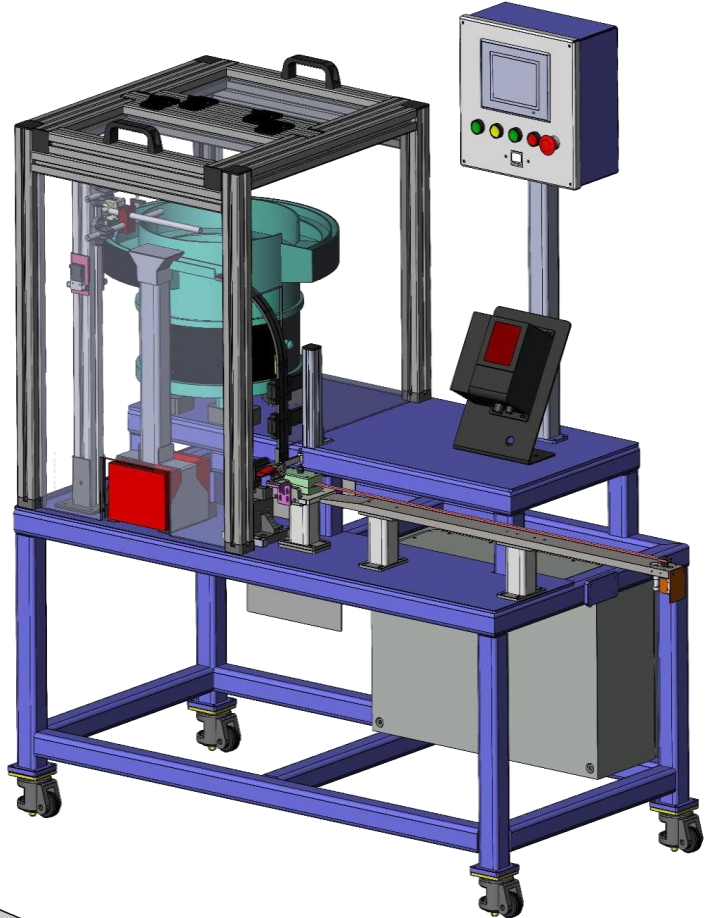
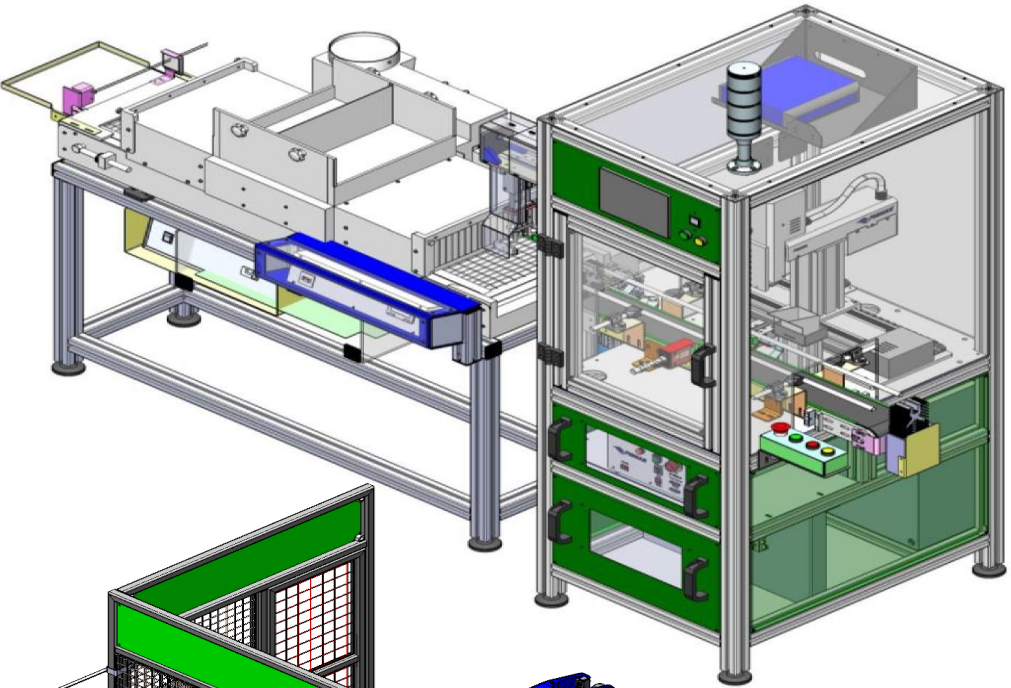
Consulting

- ✓ Mechanical Sketch & design
- ✓ End-Arm Tool Designing (EOAT)
- ✓ Product Development & Research
- ✓ Corporate Training on Robotics

Simulation

- ✓ Proper Feasibility of Integration
- ✓ Calculating ROI & Cycle Time
- ✓ Flexibility
- ✓ Life cycle& Space Optimization

DESIGNING



APPLICATION AREAS



Assembly



Pick & Place



Screwdriving



Palletizing



Visual Inspection



Dispensing

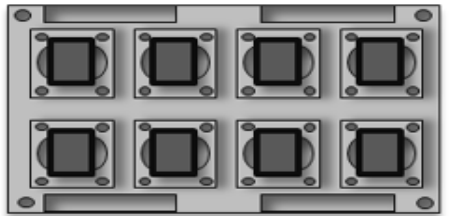
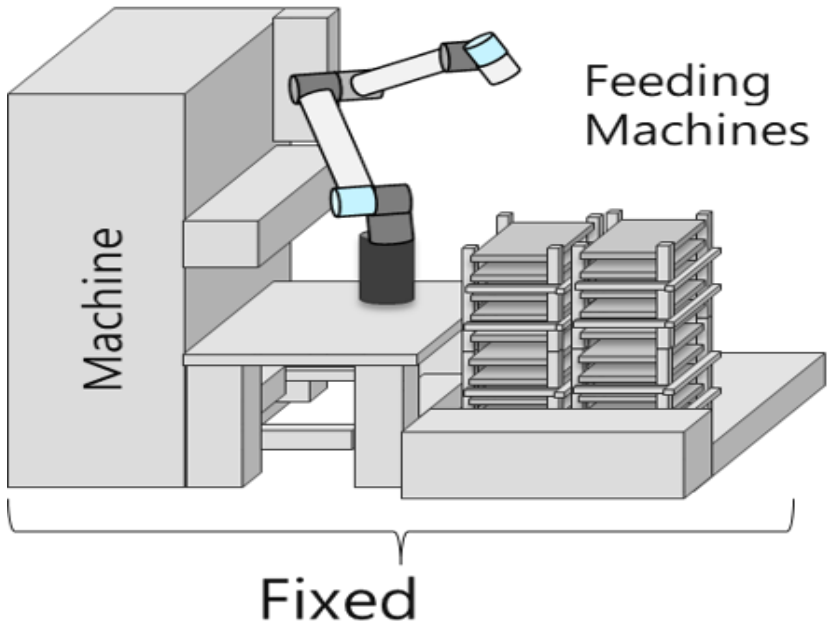


Machine Tending

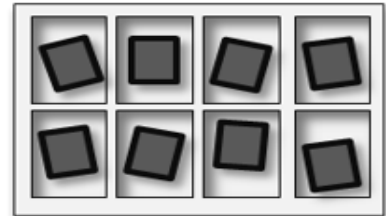
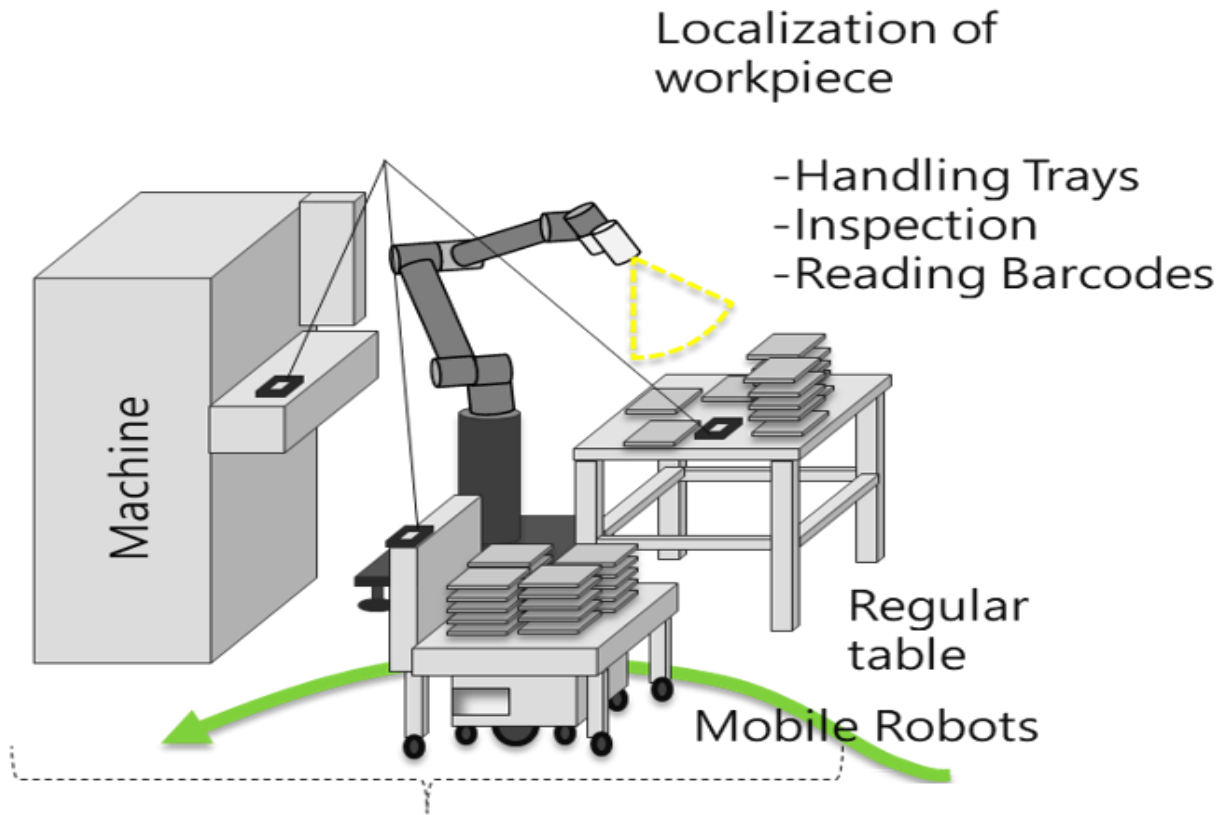


Mobile Manipulation

AI BASED VISION INTEGRATED ROBOT



Trays Jigs

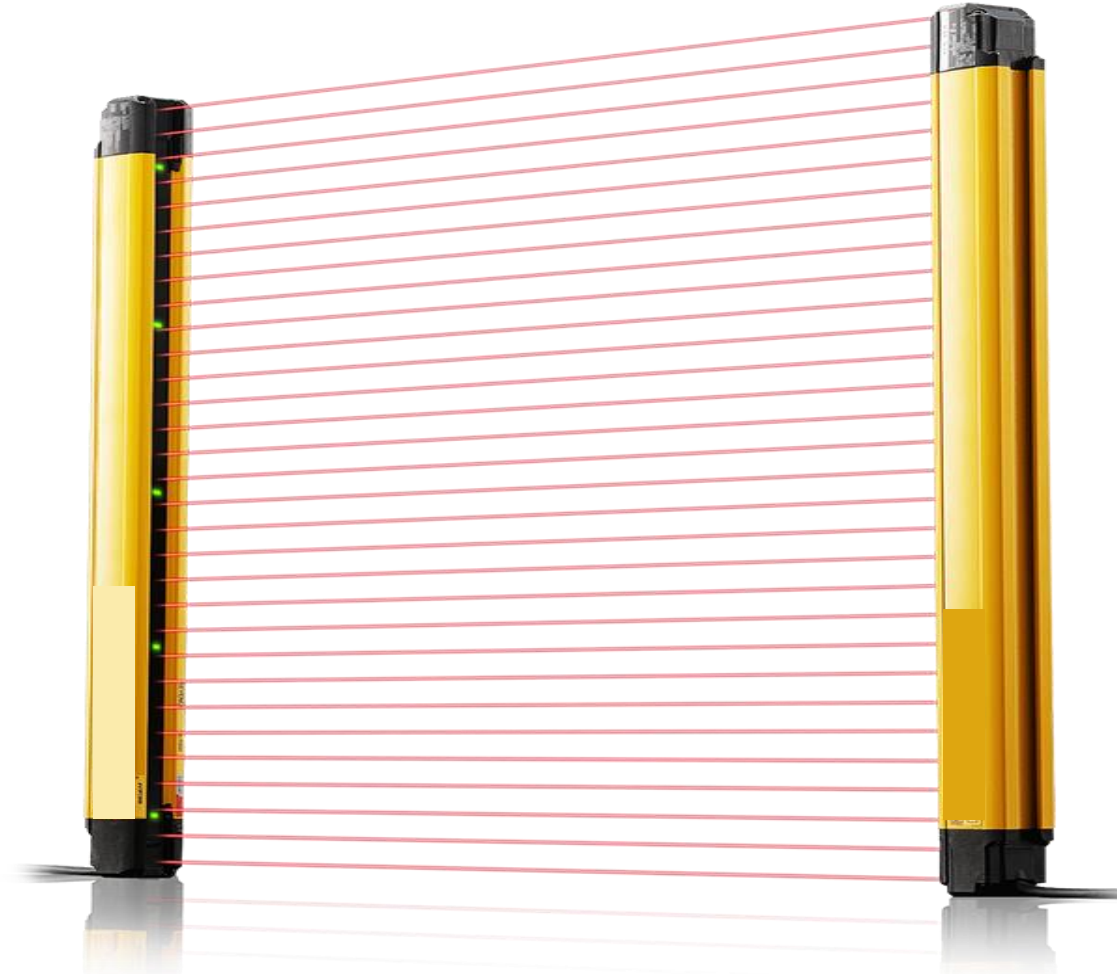


Regular Trays

VISION INTEGRATION



SAFETY & VISION INTEGRATION

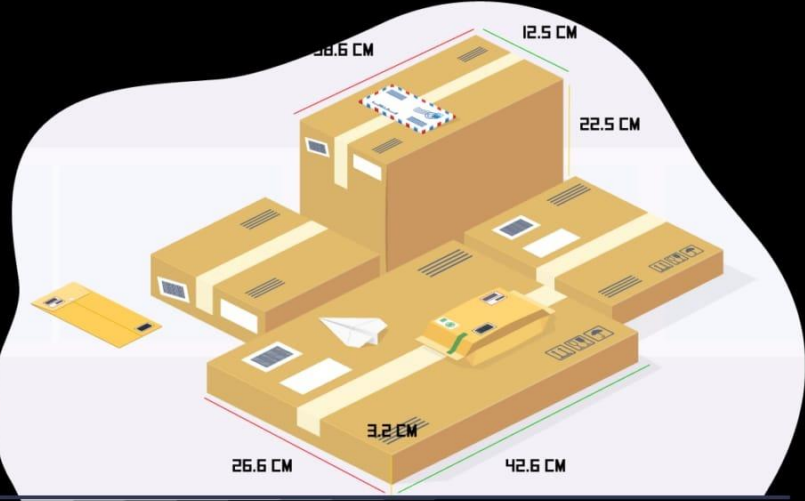
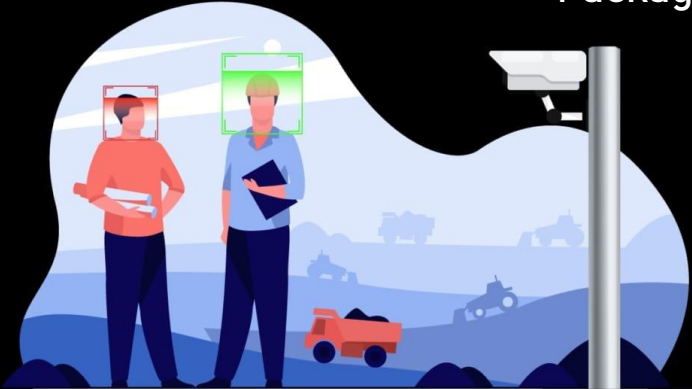


SIMULATION



VISUAL PROCESS ANALYTICS

Packaged applications that shall add high value propositions



VISUAL PROCESS ANALYTICS

Our advanced technology solution built for factories. We are thrilled to hear you see a high-value proposition in our innovative AI solution Surveillens.AI, with regards to our discussion, We hereby share our [PPT/Promo Videos](#) for your reference.

As for our expertise, we focus on 4M, SOP Method Tracking & Analytics, Safety and Security Monitoring along with Tracking in your plant.

Production AI

4M, OEE, Downtime,
Wastage, Losses

Procedure AI

SOP (Manual Operations)

Safety AI

PPE (Helmet, Jacket, Goggles,
Mask)

Security AI

Fence, restricted area
Movement

Tracker AI

Forklifts, EOT, Cranes,
Trucks

Custom

Ground breaking tech to solve
Unique real-world problems

OUR BUSINESS PARTNERS

HIKROBOT EPSON



SICK
Sensor Intelligence.

SAM
ENGINEERING

OUR VALUABLE CUSTOMERS



LARSEN & TOUBRO



marico



ASHOK LEYLAND



COMMSCOPE®
now meets next



SUPER AUTO FORGE
Forging ahead into future since 1975



ROYAL ENFIELD

OUR OFFICE PREMISES



OUR OFFICE PREMISES



WORSHOP PREMISES AT COIMBATORE



FACTORY FACILITIES: -

Shop Floor - 7000 Sq. Ft

Office Area
1000 Sq. Ft

Canteen
150 Sq. Ft

Parking
200 Sq. Ft

Shop Floor
4550 Sq. Ft

Conference Hall
400 Sq. Ft

Store Area
550 Sq. Ft

FACTORY FACILITIES: -

Resources of Machinaries

CNC/ Lathe Machine

VMC Machine

Surface Grinding

Welding
[Tig / Arc]

Bench Drilling

Surface Table &
Material Handling
Equipment

DEVELOPMENT IDEAS & PARTNERSHIP:-

1. Establish partnership for production automation
2. Production support for Hardware components
3. Manpower for Operational & Maintenance can be provided
4. Support for Robotronix for establishing International projects.

We have associated and partnered companies for support our vendors on the production & producing support.

THANK YOU!

 <https://therobotronix.com>

 info@therobotronix.com

 +91 95000- 49899

