



AXIS Solutions Pvt. Ltd.

Sustainable Environment, Process Analytics,
Instrumentation & Automation Solutions

www.axisindia.in



AXIS AT GLANCE



Dr. Bijal Sanghvi

Managing Director

“Since 1999, with a vision to provide efficient, reliable, and sustainable solutions for increasingly complex industrial environments. We, Axis Solutions Pvt. Ltd., emerge as a world-class System Integrator & innovative solutions provider to cater to oil & gas, petrochemicals, refineries, power plants, minerals & other engineering verticals globally through our worldwide regional offices by the team of 180+ that drives Axis passionately in our facilities with engineering, manufacturing, testing, research, and development to provide solutions in Analytical specifically for Gas; Water; Hydrocarbon measurement, Thermal management, Pressure-regulation, industrial automation, IIoT & Industry 4.0.”

OUR VERTICALS

Analytical Systems

Integrated Shelter

- Analyzer Shelter
- Process GC Shelter
- Passive Cooled Shelter

Integrated CEMS / GAS

Integrated SWAS

Purge Panel

System Solutions

- Calibration Unit
- Aspiration System
- Close Loop SHS
- Liquid Sample Recovery System
- Auto Change Over Unit
- Double Block and Bleed System
- Validation System for HC Liquid

Analyzer Packages/ Solutions

Blending Analyzer System

Sulphur Recovery Unit

FGD

Process Packages

AAQMS

Shelter with Analyzer

CEMS with Analyzer

SWAS with Analyzer

Liquid & Water Solutions

Axis Products

AMISON | GAS Components

baspa | SWAS Components

Typhoon | Pressure Regulators

snowind | Thermal Systems

- Ex HVAC / HVAC
- Ex AC / Split AC
- Ex Proof Chiller
- Vortex Cooler

Partner Products

Analytics & Process



Transmission & Signal



Enclosure Product



Automation & IIoT



Services & MRO

Health check up

Installation

Commissioning

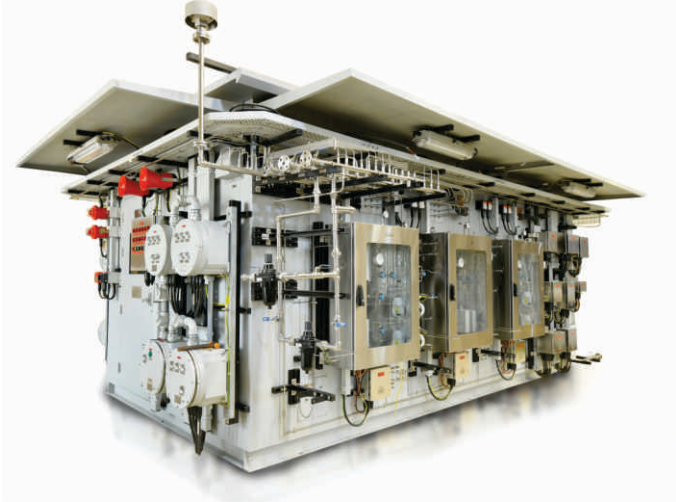
AMC

CMC

Extended Warranty

Retrofitting

Analyzer Shelter



- » Suitable for Zone 1 or Zone 2, GR. IIC or IIA, IIB
- » SS 304, SS 316, GI options available

Applications

- » Flow metering
- » Gas chromatograph
- » Blending, SRU & Process Analytical

E-House



- » Custom sizing available
- » Inbuilt Auxiliary equipment options

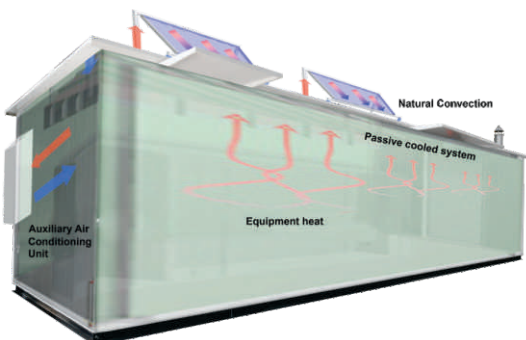
Types

- » Fire Retardant
- » GRP
- » Fire Resistance
- » Blast Proof

Applications

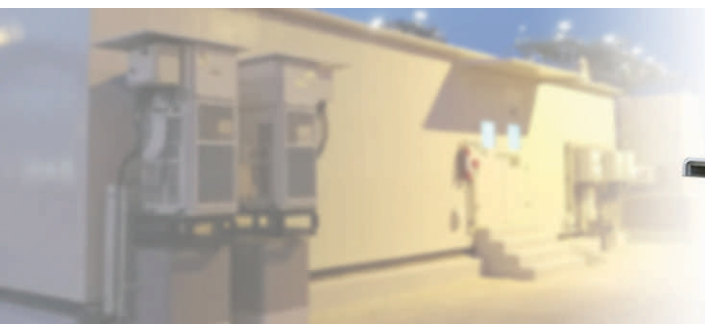
- » Electrical room E-House
- » Power & Communication
- » Data storage E-House
- » Instrumentation E-House

Passive Cooled Shelter



- » 10-15°C Cooler than daytime ambient*
- » No Electricity, No Maintenance, Eco-Friendly
- » Plug and play installation

* Depends on Day & Night Temperature Difference



Purge Panel



IP65

- » HC accumulation is taken care
- » Best Economical option

Types

- » Purge panel for Zone 1 / Zone 2
- » Purge panel with Ex AC / IP65
- » Purge panel with Vortex cooler

GAS GAS Analysis System



- » Hot Extractive
- » Dilution Technology
- » Multi Measurement System

Measurement

- » CO & CO₂
- » CH₄
- » SO₂
- » O₂
- » THC
- » NOx, NO
- » SPM
- » Opacity & Particulate
- » Zirconia Oxygen Analyzer

AMISON Gas Components



Sample Gas Probe



Blow Back Sample Gas Probe Box



Sample Gas Cooler



Sample Pump



Sample Gas Filters



Ex-Proof Sample Gas Probe



Dilution Probe & Controller



Ex-Proof Sample Gas Cooler



Peristaltic Pump / Liquid Drainer



NOx Converter



SWAS - Single/Multi Stream

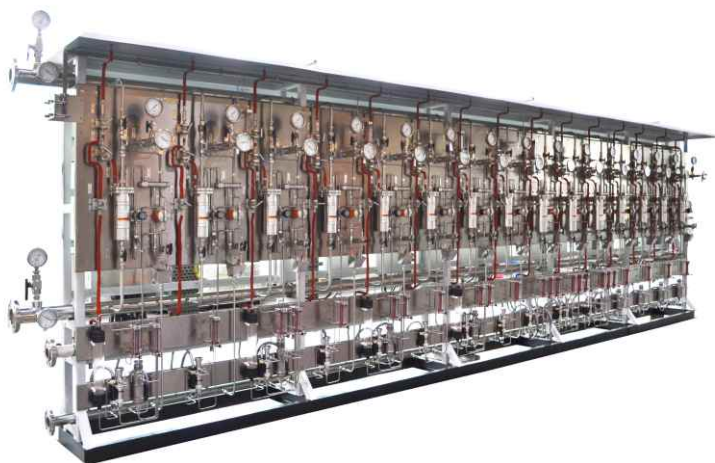
Steam and Water Analyzer Systems



- » Compact Design
- » Efficient cooler design
- » Ease of Installation
- » ASME PTC Standardized Sampling system
- » Open Rack type / Walk Through panel / Inside Shelter
- » Online analysis with Grab Sampling

Measurement

- » pH / ORP
- » SC, CC, CD
- » Dissolved O₂
- » Chlorine
- » Silica
- » Sodium
- » Phosphate
- » Hydrazine
- » Hydrocarbons in Water
- » Oil in Water



bãspã SWAS Components



Sample Cooler



Miniature Header



Direct Acting Pressure Reducing Valve



Auto Shut-off Valve



Sight Flow Indicator



Strainer



Back Pressure Regulator



Cation Column

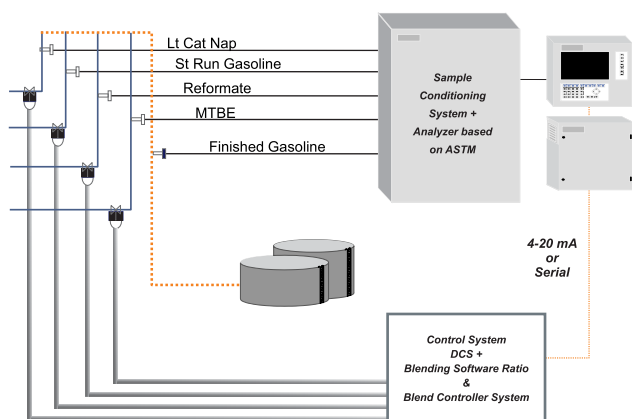


Process Analyzer Packages

- › PPU (Polypropylene Unit)
- › HGU (Hydrogen Generation Unit)
- › CCR (Continuous Catalyst Regeneration)
- › ISOM (Isomerization Unit)
- › SRU (Sulphur Recovery Unit)
- › Blending Analyzer Package
- › Fuel Oil Conversion - RA1K
- › LAB (Linear Alkaline Benzene)
- › TGTU Desulphurization
- › Coal to Methane
- › VCM (Vinyl chloride monomer)
- › DHDT (Diesel Hydro-treater Unit)
- › FCCU (Fluid Catalytic Cracking Unit)
- › HCU (Hydro Cracker Unit)
- › Green Hydrogen Application
- › PVC (Poly Vinyl Chloride)

Blending Analyzer System

Analyzer system solution for blending of MS, HSD, Naphtha



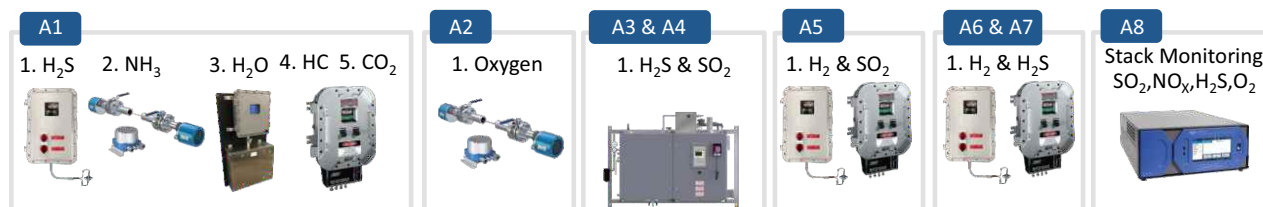
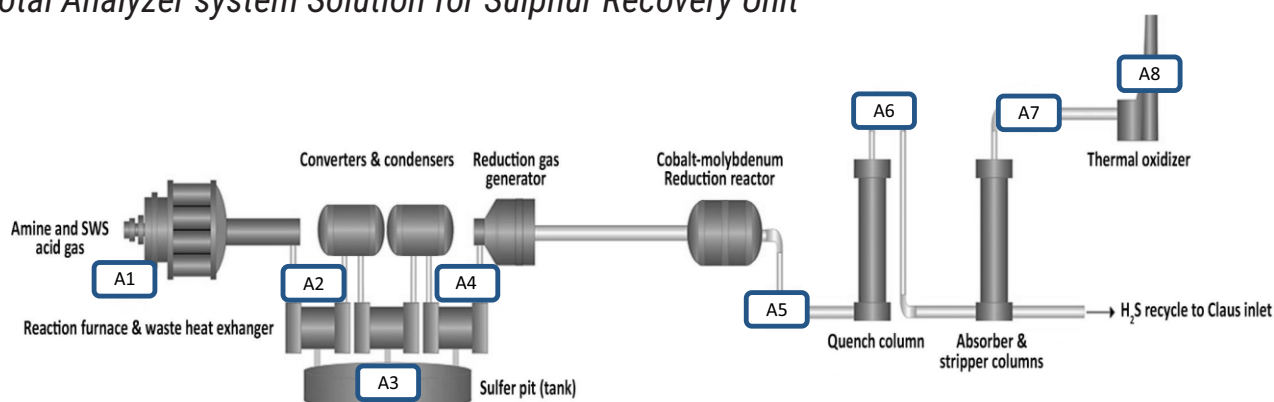
- › Analyzer shelter with HVAC
- › Sample handling system
- › Fast loop pump skid
- › Validation tank
- › Sample recovery unit
- › FAT and SAT support

Measurement

- › Sulphur
- › Density
- › Viscosity
- › Flash Point
- › Cloud Point
- › RVP
- › Distillation
- › NIR Analyzer

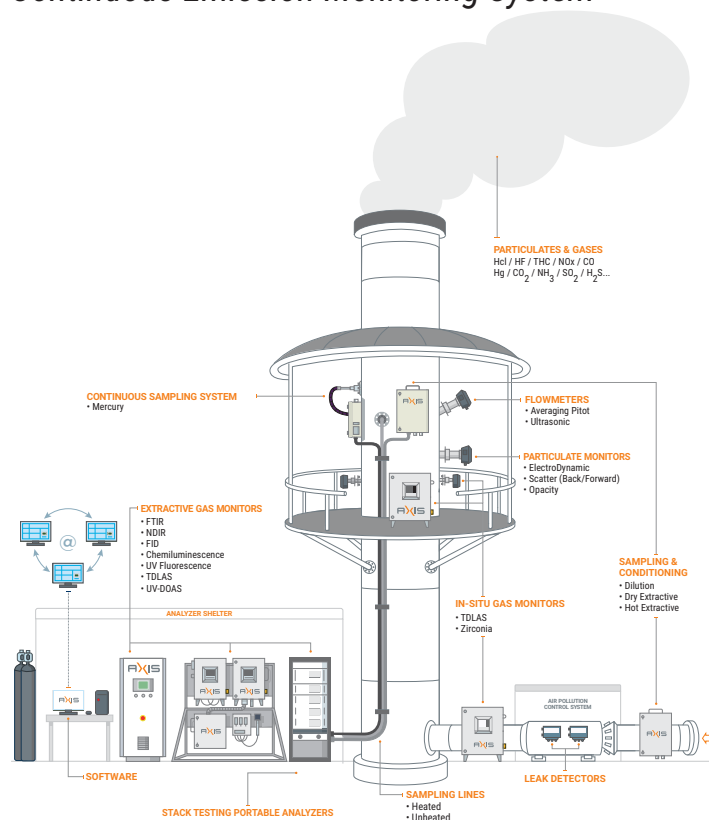
Sulphur Recovery Unit

Total Analyzer system Solution for Sulphur Recovery Unit



CEMS

Continuous Emission Monitoring System



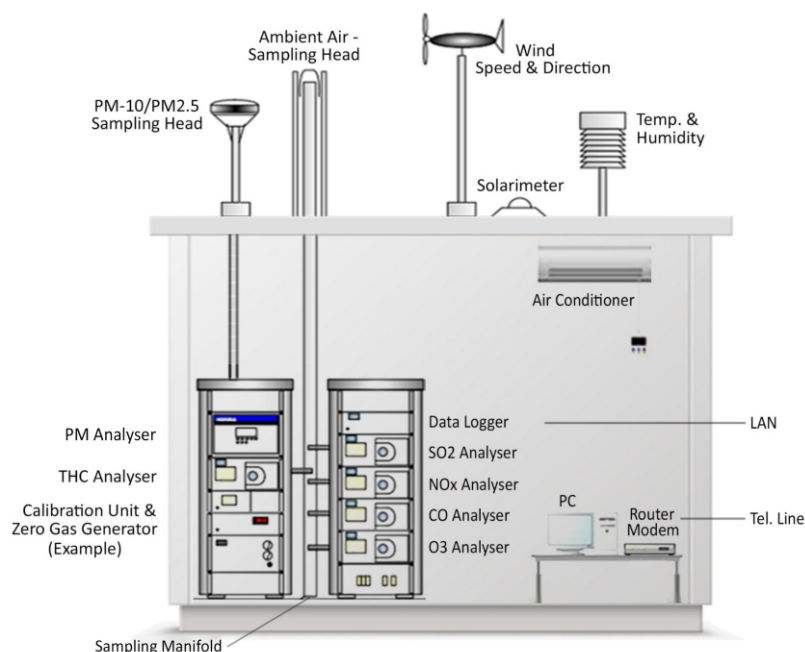
- » Data Acquisition System
- » Auto Calibration System
- » 19" Rack Mounted Analyzer

Measurement

- » SO_x, NO_x, CO & CO₂
- » O₂
- » Mercury
- » Stack Dust Monitor
- » Stack Flue Gas Flow Meter
- » Temperature and Moisture
- » Differential Pressure Transmitter

AAQMS

Ambient Air Quality Monitoring System



- » AAQMS Shelter / Mobile van
- » Automatic Calibration System
- » DAS with Data Connectivity to CPCB & SPCB

Measurement

- » SO₂
- » NO, NO₂ & NO_x
- » CO, CO₂
- » O₃ (Ozone)
- » NH₃
- » VOC (BTEX)
- » PM10 & PM2.5
- » Metrological Sensors

XVAC

Heating and Ventilating Air Conditioning Unit



- » Industrial heavy-duty design
- » Redundant unit / Blower option available
- » 3, 5, 7.5, 10, and 12-ton capacity options
- » (- ve) °C to 60° C Customizable Ambient design
- » Ease of Maintenance



Ex-Proof AC



- » Split and Standalone type Models
- » Designed for 0 to 60° C Ambient temperature
- » 110/230/415/480 VAC, 50/60Hz input supply
- » 0.6, 1, 1.5, 2 Ton Capacity



Ex-Proof Chiller



- » Suitable to Zone 1 & 2, IIB + H2
- » Efficient cooling capacity
- » High-Quality CRCA, SS 304, SS 316 options
- » Individual electrical components are ATEX / PESO certified



Typhoon Pressure Regulators



Auto Change Over Regulator



Single Stage Pressure Regulators



Dual Stage Cylinder Pressure Regulator



Piston Type Pressure Regulator



Back Pressure Regulator



Relief Valve - Adjustable



Inline Relief Valve /
Inline Filter



Pilot Operated Pressure
Reducing Valve



Dome Loaded Pressure Regulator

snowind Thermal Components



Indoor/Out Door Air Conditioning Unit



Safe Area Chiller Unit



Vortex Cooler



Peltier Air Conditioning Unit



Vortex Tube

Calibration Unit

For Zirconia Oxygen Analyzer



Auto Calibration Unit



Manual Calibration Unit

Aspiration System



Suitable for Gas Detectors

Close Loop Sampling System

CLSS



Sample Cylinder DOT/TPED approved

Auto Change Over Unit

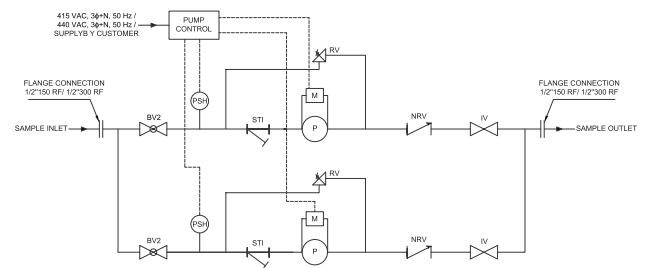


Liquid Sample Recovery System

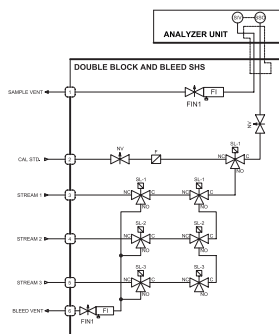


Suitable for Zone 1 or 2 Gr IIA/B, IIB+H2

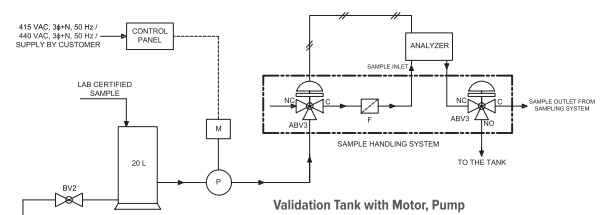
Fast Loop System



Double Block & Bleed System



Validation system for HC liquid





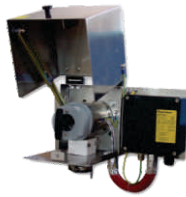
Gas Analysis and Fluid Control



Sample Gas Pump



Sample Gas Filter



Sample Gas Probe



Level Switch

- Safe / Hazardous area Cooler
- Low / High-Pressure Filter
- Low / High Dust Probe
- Oil & Water level Switch

Process Instruments



- Smart, Head & Din Rail Transmitter
- Single Instrument for Multi-parameter
- Display Auto Shut-Off Facility
- Bluetooth, IoT & Hart Available
- Weatherproof IP65, IP67



Pressure Transmitter



Electromagnetic Flow Meter



Ultrasonic level Transmitter



Ultrasonic Flow Meter



Temperature Transmitter



Vibration Sensors (Condition Monitoring Solutions)



Safe Area LP300 Series



Hazardous area LP802



Triaxial Accelerometer AC115



Signal Conditioner SC300

- 4-20mA Loop Power Sensors
- Industrial Accelerometers
- Ultrasound Sensors
- Hazardous Area Sensors
- Mounting Accessories

Thermal Imaging Camera



- Hand-held Non-contact pyrometer
- Thermal Imaging Camera
- Hi-speed Thermal Scanner
- Furnace Monitoring System
- Gold cup Surveying



LWIR



Cyclops



NIR-Borescope 3XR



Non-Nucleonic Density Meters



SDM Eco



CDM



CCM

- Chemical resistant sensors
- Safe technology (non-nuclear)
- Corrosion and abrasion-resistant sensors
- Easy operation and installation



Process and Emission Monitoring Analyzers



Oxygen Analyzer



Gas Chromatograph with Oven



Continuous Gas Analyzer

- Modular Analyzer design for SO₂, NO, CO, O₂, H₂, CH₄ & other HC.
- GC with smart oven for HC's & other process gas measurement
- Zirconia Based Oxygen Measurement

Natural Gas Analyzers



- Eliminator cell block design
- Bio gas, Waste water & Natural gas application
- Bi-directional RS485 communication



Oxygen Analyzer



H₂S Analyzer



Moisture Analyzer



Sulfur Recovery Block Analyzer



Feed Gas Analyzer



Tail Gas / Air Demand Analyzer



Demister Probe



Heated Acid Gas Probe

- Feed Gas for H₂S, HC & NH₃ Measurement
- Tail Gas for H₂S, SO₂ & Air Demand
- No Sample connection inside Analyzer
- Patented Probe with inbuilt flow-cell

Gas Analyzer



- TDLAS & UV-DOAS Analyzers
- Dust & Flow Monitor
- Portable Gas Analyzer
- Mercury and VOC Gas Analyzer
- Emission Monitoring Analyzers



UV-DOAS



Dust Monitor



TDLAS



Stack Flow Meter



Stack Gas Analyzer



Multi parameter NDIR Gas analyzer



Zirconia in situ type O₂ Analyzer



H₂ Analyzer

- SO₂, NO, CO, CO₂ & CH₄ Analyzer
- Oxygen (Paramagnetic / Zirconia)
- Hydrogen measurement
- HCL measurement
- Cross stack Laser CO+O₂ Analyzer
- Bio mass Gas Analyzer

Panametrics

a Baker Hughes business

Process Analyzer



Portable flow meter



O2 Analyzer



Moisture Analyzer



H2 Analyzer

- Oxygen Analyzer, Hydrogen Analyzer
- Moisture Analyzer (TDL / AL2O3 / Chilled mirror)
- Clamp on type flow meter (Liquid/Gas)
- In line flow meter (Liquid/Gas)
- Portable flow meter (Liquid/Gas)

- Opacity & Particulate
- H₂, CH₄, O₂, Air, N₂, CO₂, Ar, Binary gas mixture
- Portable / Online Oxygen Analyzer (ppb, ppm, %)
- THC (FID based)

Oil & Gas Analyzer Measurement



Oxygen - Hydrogen Analyzer



Dilution Analyzer



Liquid Analytics



TDL Analyzer



Portable O2 Analyzer

BRIX

Water Analyzer



Online Water Analyzer & COD, BOD, TSS, Colour



Turbidity & Chlorine Sensor



Smart Controller



Online Analyzer (Hardness phosphate, Fe, etc.)

- COD, BOD, TSS, pH, NO₃-N, NH-N, TN, Turbidity, Colour, Cond., DO, NH₄, ORP, Nitrate, Residual chlorine, FC, OIW, Oil & Grease, Fluoride, Ferrous, Hardness, Phenol, Phosphate, Iron, Total phosphate, Sulphide, Arsenic.

- Pharmaceuticals
- Food & Beverages

- pH, ORP, Conductivity, DO
- Memosense Sensor Technology
- Up to 100m cable length
- Suitable with high-temperature application

Process Analytics



pH Sensor



Conductivity Sensor



Oxygen Sensor



Stratos



Protos

Thermo SCIENTIFIC

Water Analyzer



pH Sensor



Conductivity Sensor



Chlorine



Sodium Analyzer



Silica Analyzer

- pH, ORP, Conductivity, Turbidity
- Dissolved Oxygen /Ozone
- Chlorine, Silica, Phosphate
- Oxygen Scavenger, Sodium
- Ammonia, Fluoride, Calcium



Industrial Protocol Converters



- 25+ Industrial Comm. Protocols
- Interface / Media converters
- Protocol Converter for
 - » Factory / Process Automation
 - » BMS / Automotive / Power

- Optimum Cable Entry available in LIU
- To Monitor Positive / Negative Air Flow
- Single & Multimode converters
- Temperature Humidity Transmitter
- Smart IO Module



Networking & Communication

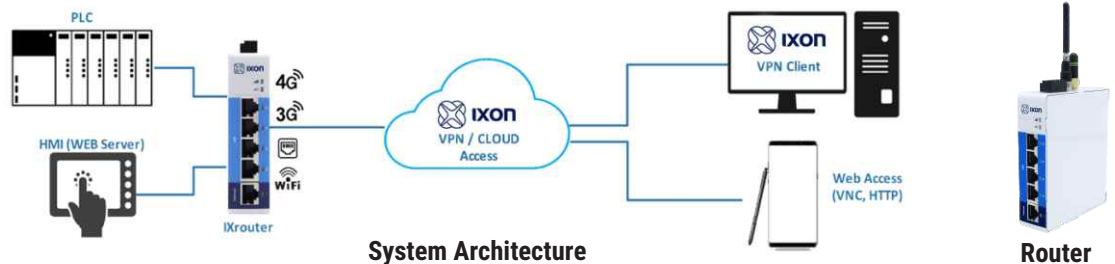


Smart Cable Management



- Cable Management Solutions
- EMC Shielding
- Cable Strain Relief
- FDA Cable entry
- ATEX Cable entry

- Machine to Cloud
- Integrated Remote Access
- Gateways & Routers
- Security & Compliance



Remote service & IIoT platform



Interface Technology



- Ideal for
 - » Railway / Locomotive
 - » Nuclear systems
 - » Steel and Metal
 - » High Voltage/Current Power



Industrial Networking



5 Port



10 Port



16 Port



26 Port



Media Converter

- Managed / Unmanaged switch
- PoE / 802.3bt PoE switch
- SFP Module 10/100 mbps to Gigabit
- Fiber Optic + Ethernet Switches

Automation Interface



- RTUs
- Cloud Box
- Dataloggers
- I/O Modules
- Signal Isolators
- VPN System



I/O Moduls



Datalogger



Modbus Gateway



RTUs



Thermal Management



Thermostat



Heater



Panel Light



Temp. Humidity Sensor



Pressure Compensation Device



Drainage Device

- Regulating
- Heating
- Measuring
- Lighting
- Cooling
- Accessories

Industrial PCs, IoT Gateways & Switches



- Fan Less Box PC
- Touch Panel PC
- Water Proof Panel PC
- IoT Gateway Devices
- Ethernet Switches



Fan Less Box PC



Touch Panel PC



IoT Device



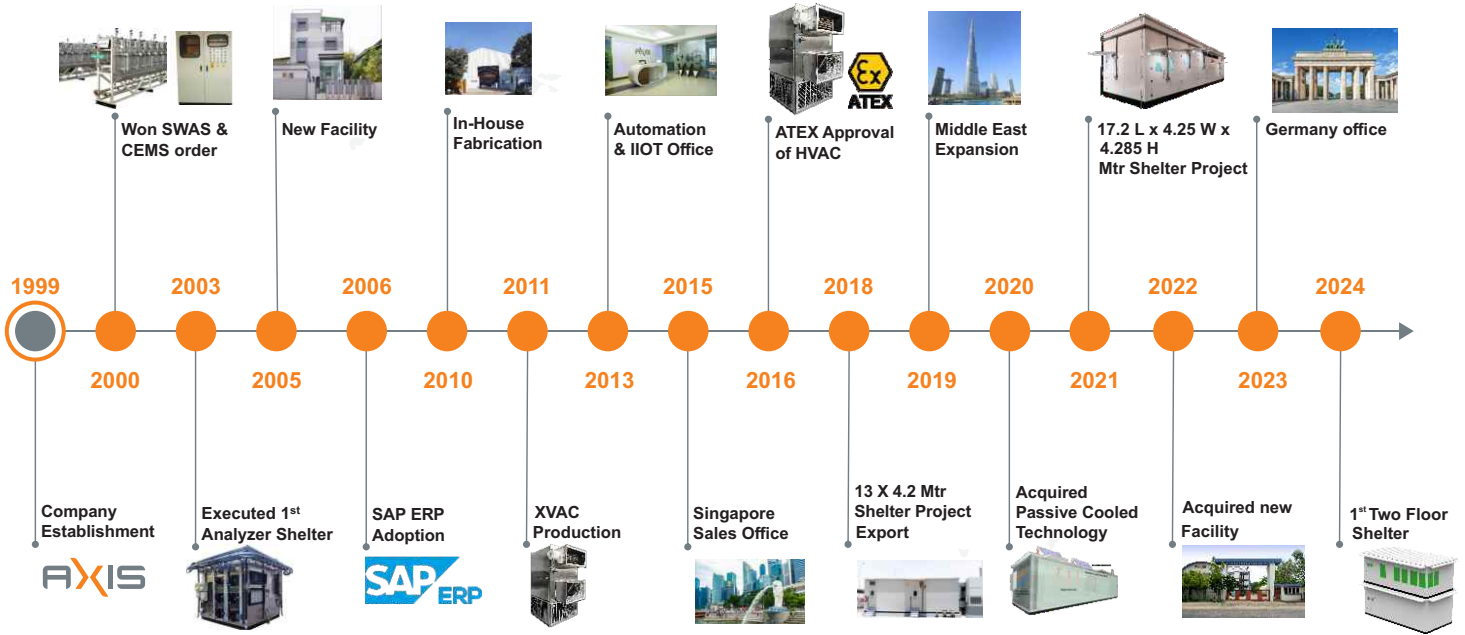
8 Port Switch



16 Port Switch

Our Journey

1999 Onwards



Partners



India

Axis Solutions Pvt Ltd
Plot No. 107-112, Road No.6, G.I.D.C.,
Kathwada, Ahmedabad-382 430,
Gujarat, India. Tel. : +91 9909906354
sales@axisindia.in | www.axisindia.in

Dubai

Axis Solutions FZE
FZJOAB1002, 10th Floor Jafza One,
Jebel Ali, Dubai.
sales@axisfze.com

Singapore

Brix Engineering Pte Ltd
190, Middle Road, #16-01, Fortune Centre,
Singapore - 188979.
M : +65 94446 2236
sales@brixengg.com | www.brixengg.com

Germany

Brix Engineering GmbH
6th Floor, Kokkolastrasses 5,
Ratingen, 40882, Germany
sales@brixengg.com | www.brixengg.com

Delhi | Mumbai | Pune | Bangalore | Chennai | Lucknow | Kolkata

USA Branch office : 7040 Virginia Manor RD. Beltsville, MD 20705, USA